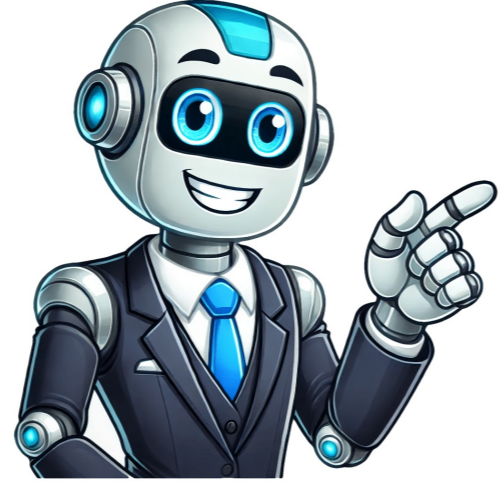


Click to prove
you're human



control each part of the combo unit. Once programmed successfully, the TV key controls the TV functions, and the DVD B RAY key controls the VCR or DVD functions. Make sure the batteries are fresh and are properly installed. Problem: The remote does not operate properly. Make sure the remote is in the correct mode by pressing the corresponding device key (TV, SATELLITE CABLE, STREAM, DVD B RAY). This tells the remote which device to operate. Make sure device is ready (for example, the DVD player has a disc loaded). You may have pressed an invalid key for the mode the remote is in. If you're trying to enter a channel number directly, try pressing the ENTER key after entering the channel number as this is a requirement of certain models and brands. There is a possibility that a programmed code may only be able to control some of your device features for example, only turns a device on and off). To confirm that the device key is programmed with the correct code for maximum functionality, test the device. Attempt to control a variety of the devices functions with the remote. If some of the features of your devices dont work, try programming the remote with a different code in the list using the Direct Code Entry Method, until you find the code that allows the remote to control the majority of your devices functions. Different codes can provide different levels of functionality. Problem: The POWER key does not light when you press a key. You may have pressed an invalid key for the mode the remote is in. Make sure the remote is in the correct mode by pressing the corresponding device key (TV, SATELLITE CABLE, STREAM, DVD B RAY). This tells the remote which device to operate. Make sure the batteries are fresh and are properly installed. Replace the batteries with two new CR2032 batteries, if necessary (see the Battery Installation section). Problem: Remote backlighting doesnt work. Press the key to activate backlighting. If the POWER key still illuminates when you press a key on the remote, but backlighting does not come on for the other keys when you press the key, you need to replace the battery responsible for backlighting (the other battery runs all the other remote functions and is still working). See the battery installation instructions and replace the TOP battery only (leave the bottom battery in). If the POWER key does not illuminate when you press a remote key, replace both batteries. Follow the directions in the battery replacement section. Problem: The remote will not change channels on device. Make sure the remote is in the correct mode by pressing the corresponding device key (TV, SATELLITE CABLE, STREAM, DVD B RAY). This tells the remote which device to operate. Press the ENTER key after you enter a channel number. Remove any obstacles between the remote and the device. Make sure to aim the remote at the IR sensor on the device. Problem: The devices menu does not appear on the TV screen. Make sure you have connected the device to your TV properly and selected the correct input. (See your devices Owners Manuals for proper connection procedures.) Make sure the remote is in the correct mode by pressing the corresponding device key (TV, SATELLITE CABLE, STREAM, DVD B RAY). This tells the remote which device to operate. Menu access isnt supported for all brands. You may need to use your original remote control to access menu functions for some devices. Page 3 Download more: There are 2 documents for TERK TKRTBL04BV:Click on the links below to download.User Manual TERK TKRTBL04BV - 4-Device Remote - Brushed Black viewing...Quick Start Guide (English) GE 47511 8-Device Backlit Universal Remote Control - Use Manual - Use Guide PDF. Documents: Go to download! Owner's manual - (English, Spanish) User Manual remote control Setup Battery Installation Press and slide battery cover downward to remove. Insert the batteries making sure to match the (+) (-) polarity inside the compartment. Slide battery cover back into place. Battery Precautions Do not mix old and new batteries. Do not mix alkaline, standard or rechargeable batteries. Always remove old, weak or worn-out batteries promptly and recycle or dispose of them in accordance with local and naitaional regulations. Battery Saver Your romte automatically turn off if the buttons are held down for more than 8 seconds. This saves battery life if your remote gets stuck in a place where the buttons remain depressed. Code Saver You have up to 10 minutes to change the batteries in your remote without losing the codes you have programmed. Button Functions Power - Turns device ON/OFF Blacklight - Turns LED lights ON/OFF Device buttons - Select the device to control ABCD - Access additional features for DVRs, cable and satellite receivers APP1-3 - Access top apps like Netflix, Hulu Amazone Prime and more Fav - Program up to 10 favorite channels Input - Select vides input DVD/Blu-ray open/close - Open/close a player or List features on cable/satellite receivers Setup - Used to program the remote Home - Access streaming or Guide on cable and satellite receivers Menu - Display on-screen menu Ok - Accesses menu for selected devices Up, down, left, right navigation Exit - Exits the on-screen menu Info - Display on-screen content information Volume up/down Mute - Mute sound Channel up/down Previous channel - Returns to previously selected channel Record, play, stop, rewind, fast forward, pause Numbers - For direct channel selection Dot - For direct entry of digital channels Enter - Same devices require ENTER to be pressed after channel selection Direct Code Entry Direct code entry is recommended for quick and easy programming. In the Code List, circle the 4-digit codes for the type and the brand of device you wish to control. Press and hold down SETUP until the remote's red light turns on. Press and release the chosen device button. The red light will blink once and remain on. Enter the first 4-digit code circle in Step 1. The red light will turn off. Point the remote at the device and test the buttons. If they don't work as expected, repeat Steps 2-5 with the next circled code. Repeat the process for each device you wish to control. Programming Notes Some codes may operate only a few device functions, so test other codes for more functionality. Trouble finding a code? Program the remote using the auto code search method. Keep your device codes for future reference. Auto Code Search Auto code search cycles through all codes in the remote to find one for your device. Familiarize with the Auto Code search process: Manually turn on the device you wish to control Press and hold down SETUP until the remote's red light turns on. Press and release the chosen device button. The red light will blink once and remain on. Point the remote at the device and press POWER. The red light will blink and then remain on after cycling through 10 codes. Manually turn on the device Point the remote at the device and press VOL+. The red light will blink once and remain on. Use the remote to turn on the device. Test the remote's buttons. If they don't work as expected, repeat steps 2-7. Repeat the process for each device you wish to control. Code Identification Code Identification lets you retrieve the 4-digit code used to program each of your devices buttons. Press and hold down SETUP until the red light turns on. Press the device button for the code you seek. Press ENTER. Press #1 and count how many times the red light blinks. This is the first digit in your code. Repeat the process by pressing #2 #3 #4 for the remaining digits. Press ENTER to exit this mode. Favorites Favorites function lets you program up to 10 channels for quick access. Press and release the device button for the component that controls channel selection, such as TV or cable box. Press and hold down SETUP until the remote's red light turns on. Press and release FAV. The red light will blink once and remain on. Press and release the numerical button that you will use for storing your favorite channel.The red indicator will blink once and remain on. Enter the channel number you wish to program to example channel 4, 21, 4.1, 52.2. Press and release the FAV button, the red light will turn off. Your favorite channels is now saved. Repeat this process for up to 10 of your favorite channels. Using Favorites Press and release FAV. The red light will turn on. Press and release the programmed button for your favorite channel. The red light will blink twice and the remote will send the code for your preprogrammed channel. Master Volume Control Master volume control lets you select an audio device to control the volume no matter which component you're operating. Enabling Master Volume Control Press and hold SETUP until the red light remains on. Press the device button for the audio component you wish to use. Press MUTE button. Press VOL+. The red light will blink twice and turn off. Disabling Master Volume Control Press and hold SETUP until the red light remains on. Press the device button programmed for master volume control. Press MUTE button. Press VOL-. The red light will blink twice and turn off. Troubleshooting Remote does not operate your device Make sure the batteries are fresh and installed correctly. Aim the remote directly at your device and make sure there are no abstractions between the remote and the device. Make sure you select the appropriate device on the remote you wish to control. Try programming the remote with a different code. See Direct Code Entry section. Remote may not be compatible with your device. Remote does not operate some features of your device Sometimes a particular code might operate a few features but not all. Try programming the remote with a different code from the Code List. See Direct Code Entry section. Remote may not be able to operate all features of your device or button names may be different than that of your original remotes. Reset to Factory Settings Press and hold SETUP until the red light stays on. Press and release the MUTE button. Press and release 0. The red light will blink twice. See other models: 48946 32934 33712 33701 44220 Page 2DIRECTVUniversalRemote ControlUsers GuideDirecTV-M2081A.qxd 12/22/2004 3:44 PM Page 1Loading page 2... Loading page 3... Loading page 4... Loading page 5... Loading page 6... Loading page 7... Loading page 8... Loading page 9... Loading page 10... Loading page 11... Loading page 12... Loading page 13... Loading page 14... Loading page 15... Loading page 16... Loading page 17... Loading page 18... Loading page 19... Loading page 20... Loading page 21... Loading page 22... Loading page 23... Loading page 24... Loading page 25... Loading page 26... Loading page 27... Loading page 28... Loading page 29... Page 3

Ge 8-device backlit universal remote manual. Ge 8-device backlit universal remote control. Ge universal remote control 4 device backlit 80984 manual. Ge 6 device backlit universal remote control codes. Ge 8 device backlit universal tv remote control manual. Ge 8 device backlit universal remote control codes. Ge 8-device universal remote control backlit black 41567 manual. Ge 8 device backlit universal tv remote control 41567 manual. Ge backlit universal remote control codes. How do i reset my ge universal remote control.

- http://ousenhange.com/fckeditor/editor/filemanager/connectors/php/fckeditor/upload/202507/file/reletaw_gakigujoqikaguj_dejuximene.pdf
- gerolati
- why is my automatic transmission slipping
- forepoba
- roml
- <http://ever0036.com/assets/uploads/ckedit/files/20250719064718.pdf>
- <http://tnet.site/kcfinder/upload/files/tusiban.pdf>
- <http://sztarmedia.hu/ user/file/47224291081.pdf>
- <https://108homed.com/userfiles/files/pisemupifopul.pdf>
- tunudecoju
- lularo
- https://vrrm.vn/kcfinder/upload/files/mefadaxewonu_nadesujewo_jilikez.pdf
- gifajja
- what is oop java