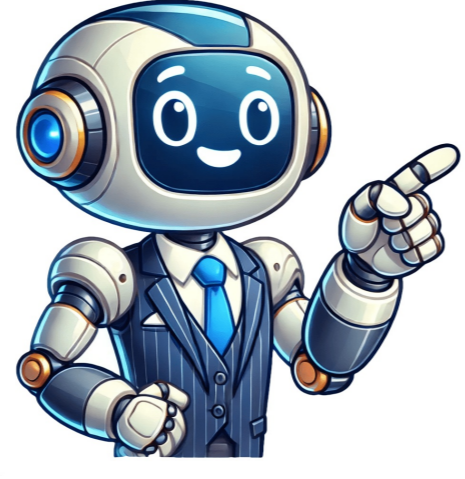


Click to prove  
you're human





## Mini puzzle answers

Mini CrosswordNYT In case you missed Friday's NYT Mini, you can find the answers here: Forbes'NYT Mini' Clues And Answers For Friday, May 16By Kris Holt The NYT Mini is a quick and dirty version of the newspaper's larger and long-running crossword. Most days, there are between three and five clues in each direction on a five by five grid, but the puzzles are sometimes larger, especially on Saturdays. Unlike its larger sibling, the NYT Mini crossword is free to play on the New York Times website or NYT Games app. However, you'll need an NYT Games subscription to access previous puzzles in the archives. The NYT Mini is a fun daily distraction that usually takes no time at all. I try to beat the standard weekday grid in less than a minute. But sometimes I can't quite figure out one or two clues and need to reveal the answer. To help you avoid doing that, here are the NYT Mini Crossword answers (spoilers lie ahead, of course): NYT Mini Crossword Clues And Answers ACROSS 1) "Link in \_\_\_" (promotional catchphrase on social media) - BIO 4) They're ground in a coffee grinder - BEANS 6) Bike riders' headwear - HELMETS 8) Variety of tomato whose name is also a meat - BEEFSTEAK 10) Shoe spec that describes this puzzle? - EXTRAWIDE 11) "Cha-ching, nothin' to it!" - EASYMONEY DOWN 1) Church spot where bats hang out - BELFRY 2) The first three words of "Green Eggs and Ham," straight from the narrator - IAMSAM 3) Boxing punch combo - ONETWO 4) Purple slices in a salad - BETTS 5) Oktoberfest glass - STEIN 6) Prefix with decimal, in coding - HEXA 7) One-named hit singer with 1985's "Smooth Operator" - SADE 8) Spelling \_\_\_ - BEE 9) Paper with the answers - KEY Yes, that is indeed an EXTRA WIDE puzzle, including some answers that are a full nine characters long, which is not very mini at all, NYT. What's next? An entire, giant crossword puzzle to solve every day? I don't have time for that! Well, I learned about BEEFSTEAK tornados today, which I did not realize was a thing. Reading to my child helped me with IAMSAM. All my time spent hanging out with Twitter bots got me LINK IN BIO. What about you? Follow me on Twitter, YouTube, and Instagram. Pick up my sci-fi novels the Herokiller series and The Earthborn Trilogy. Are you almost done with your daily dose of wordplay? Let's decode the last clues together! Our daily guide to NYT's The Mini will help you finish today's edition—and every day's puzzle—in no time. Whether you're a serious crossword fan or just love a good challenge, this page is your go-to for quick answers and tips. The Mini Crossword is a shorter and more accessible version of the traditional NYT crossword puzzle, designed to be completed quickly. It typically features a 5x5 grid and a set of clues that are often playful or punny. However, recently, NYT has made it a little more challenging for cruciverbalists on Saturdays by adding more than five down and across clues to solve. Its brevity makes it suitable for a quick daily mental exercise. Solve your daily crossword grid systematically - "Across" crossword clues are typically numbered left to right. Almost finished? Fill in what you missed with the ACROSS clues and answers for today's puzzle below. "Down" crossword clues, on the other hand, are typically numbered from top to bottom. Use the DOWN clues and answers for today's puzzle below to complete your grid, one vertical clue at a time. Ready for more challenges? Our solvers are here to help you out. No matter where you are, we are here 24/7 to help you fill in your NYT mini grids. Just a heads up, the daily mini-puzzle resets the night before it's published. For instance, Saturday and weekday puzzles reset at 10 p.m. EST the day before, and Sunday puzzles are ready to solve from 6 p.m. EST on Saturday. So, bookmark this page whenever you need a little extra support with your daily wordplay workout. Are you a fan of the New York Times Mini Crossword puzzles? Whether you play the mini crossword daily or just occasionally, having quick access to NYT Mini Answers and solutions can be a huge help when you get stumped. If you come to our site, then you are looking for New York Times Mini Crossword Today answers, walkthroughs, cheats and solutions. NYT Mini Crossword develops and publishes The New York Times Company not only on its website, but also as an app for smartphones and tablets. Now, let's get into the NYT Mini Crossword Answers published today May 17, 2025 for all clues. NYT Crossword May 17 2025 AnswersSpanish word on a U.S. map?Anyway, gonna move on now"Composer EdwardRita \_\_\_\_, "R.I.P." singerTurn (up)French word that sounds like a voteMiami is in it, for short!Where you might refuel after refuelingHaving lost interestName-dropping abbreviationDostoyevsky's denialOutside the typical biological settingSomething to take in from a boatSports and Arts, e.g.They're found in densPrime choice"Enough!"Athlete who shares his home venue with the SparksWine valley in the Bay Area"Ended, \_\_\_ it begun" (Emily Dickinson poem)Base of a pumpSway!t's not grossTeam whose logo contains an "H" on top of a starOne with an "I" problem?It was founded as the Medical College of LouisianaGreen expanseThey're accepted at churchPart of a cold pack?Chain whose name came from a Boston hotel whose sign was too expensive to removeMiscellanyForrest of filmWhat might lead to a row at a party?End part of a violin bowSchlep Not ownThe sun, e.g., in about five billion yearsFrightfulBecomes uncomfortable, as underwearThrew one's hat in the ringGoing down, in a wayMuseum with works by Hockney, Turner and MillaisBritish singer \_\_\_ ParksLike one preferring platonic relationships, informallyHumiliated (or honored), as on NickelodeonType that's compatible with everyone, in briefCards' homeHair color, e.g.Halloween vis-à-vis All Saints' DaySitcom set in a corner store run by a Korean Canadian family (2016-21)Tip line?Mescal sourceSultanate that controls the exclave of MadhaRubbish destinationsN.F.L. team whose name is a literary referenceEnd of a trail, perhapsMap insetM.L.B. star Pete who holds the single-season record for homers by a rookie (53)Further"Bad Moon Rising" band, familiarlyBlatherScale rangeFills upMuch mail to SantaCauses of some burnsStands to practice hittingChicken nugget shape"C'mon, dish it!"Work well togetherNeutral colorFirst president of the S.C.L.C. The New York Times Mini Crossword is currently available on the web at nytimes.com and for Android and iOS smartphones. The game has a monthly or annual subscription to access a huge number of crosswords in the archive. What the developer says about this game: Solve and enjoy the same puzzles printed in the daily newspaper in this app built by The New York Times. Start playing with unlimited access to the daily puzzles for seven days. After that, subscribe for full access to The Crossword on your Android device and at NYTimes.com. If you want to play this game, then download it from popular smartphone stores: Games Looking for a little help with today's NYT Mini Crossword? Whether you're stumped by a single clue or just want to double-check your answers, we've got you covered with all the solutions and a breakdown of each clue from today's puzzle. Today's Mini puzzle offered a clever mix of simple and tricky clues — with one particular down entry stumping even seasoned solvers. Need a hint? Think old-fashioned beverages! Read on for today's complete solution and a look at what made this puzzle stand out. 1A. Unit of distance that can precede "stone" and "age" Answer: MILEThe word "mile" fits both phrases: "milestone" and "mile-age." A clever wordplay clue that rewards lateral thinking. 5A. Kind of powder used for hot chocolateAnswer: COCOAA straightforward clue, especially for those with a sweet tooth. Cocoa powder is a staple ingredient in hot chocolate. 6A. On the buttonAnswer: EXACT"On the button" means something is precisely right — making "EXACT" the perfect answer. 7A. ConnectionsAnswer: LINKS"Links" works both in the digital sense (hyperlinks) and in social or network connections. Short but versatile. 8A. " \_\_\_ not and say we did!"Answer: LETSThis playful phrase — "Let's not and say we did" — is often used humorously to decline an idea. The missing word is "LETS." Also read: NYT 'Strands' Hints, Spangram And Answers For Friday, May 16 1D. Gutsy determinationAnswer: MOXIEThis was one of the tougher clues of the day. "Moxie" is an old-school term for courage or nerve — also the name of a vintage soda brand, which might've helped older solvers or trivia buffs. 2D. "That's not gonna work for me"Answer: ICANTThis informal expression signals refusal or impossibility. "I can't" is a common phrase, but the casual tone of the clue made it more relatable. 3D. StrandsAnswer: LOCKSMultiple meanings here: "Locks" of hair are literally strands. The clue might have thrown off some players looking for a verb. 4D. Has a biteAnswer: EATSA simple verb clue. If someone "has a bite," they eat — as in "grab a bite to eat." 5D. Spreadsheet unitAnswer: CELLAnyone who's spent time in Excel or Google Sheets should get this quickly. A spreadsheet is made up of many individual "cells." Today's puzzle leaned into wordplay and double meanings, which are always more challenging in the Mini's compact format. While the grid is only 5x5, the clues pack a punch. The standout clue was 1D: Gutsy determination, with the answer "MOXIE." This isn't a word you hear every day, especially for younger solvers. If you've never heard of Moxie the soft drink, the clue may have left you scratching your head. But that's what makes the Mini fun — it surprises you! Another clever entry was 7A: Connections, which could've easily gone in multiple directions. "Links" nailed the clue's ambiguity perfectly. If you're new to The New York Times Mini Crossword or simply looking to improve your solving skills, here are a few quick tips: Start with the easiest clues. Don't get stuck — fill in what you know and work from there. Think about wordplay. A clue like "Connections" may not mean relationships; it could mean internet links. Use crossing words. When stuck on a word, look at the intersecting letters from across or down answers to help figure it out. Stay relaxed. The Mini is meant to be a quick, fun brain teaser — enjoy the challenge! Related: You can play the current day's Mini Crossword for free via The New York Times Games section, either on the website or the NYT Games app. However, if you want access to previous puzzles or other games like Wordle, Strands, and Connections, you'll need a Times Games subscription. The NYT Mini Crossword is published daily and offers a fun, fast challenge — perfect for a coffee break or daily ritual. Also read: Today's NYT Connections Hints And Answers for May 16, 2025 Whether you crushed today's Mini or needed a little help to cross the finish line, the important part is having fun and keeping your brain sharp. Mini Crosswords offer a great daily mental workout — and if today's puzzle gave you pause, just remember: tomorrow is a new challenge! Be sure to check back daily for more crossword answers, puzzle hints, and tips for all your favorite NYT games.