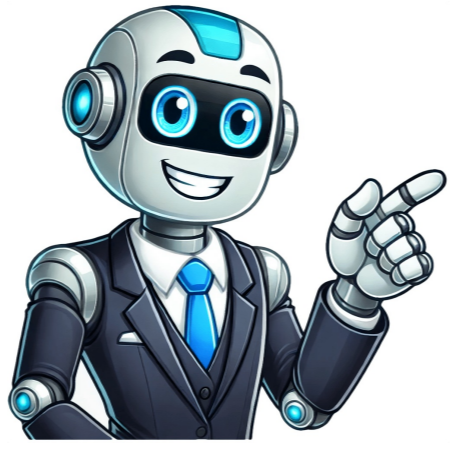


Click to prove
you're human



What size is an oversized hoodie

SleekandPeek Welcome Welcome to our store. Join to get great deals. Enter your phone number and get exciting offers BOB20# Congratulations!! You can now use above coupon code to get exciting offers. On chilly days, there's nothing more comforting than slipping into an oversized hoodie. When paired with the right pieces, it can look both cozy and stylish. To achieve this look, pick a hoodie that's one to two sizes larger than what you normally wear. Then, pair it with pants that show off your figure for a casual vibe or layer it under a dress shirt or jacket for a more put-together look. To create a street-casual look, team the oversized hoodie with jeans. This will balance out the volume of the hoodie and show off your figure. You can also add ripped skinny jeans for an on-trend option. For a sporty vibe, pair the hoodie with yoga pants or leggings. For a loungewear outfit, throw on baggy pants with the oversized hoodie. However, this look might make you appear larger than you are. If you're hanging out at home all day, it's still a super cozy option that makes you feel like you're wrapped up in a blanket. To create a high-fashion look, wear the hoodie over a long dress or shirt. This is especially stylish and warm on chilly days. Just be sure to choose a contrasting color or pattern for your dress or shirt to make the hoodie stand out. You can also layer it under a jacket for a layered effect that adds interest to your outfit. Overall, an oversized hoodie can look both cozy and fashionable when paired with the right pieces. Whether you're going for a casual vibe, a sporty look, or a high-fashion style, there's a way to dress up or down with this versatile piece of clothing. 1. Choose a jacket that is at least one size bigger than what you normally wear to allow for the added bulk of the hoodie. 2. Wear pants that are the same color if you want a monochromatic look or a different texture to break up the top and bottom. 3. Rock a hoodie dress if you're looking for a feminine option or pair sneakers with a sporty hoodie for an athletic outfit. 4. Add boots, sandals, or bags to your outfit to add style and contrast. 5. Wear sunglasses if you're heading outside to add a fashionable touch. Sunglasses provide the best eye protection, but consider adding a hat to complete your outfit. Hats add interest and keep the sun off your face, so choose one that matches your clothing. For instance, wear a cap with a sports hoodie or opt for a fedora with a regular hoodie. Wearing different hats with your hoodie is an easy way to change up your look. You can also add bling with jewelry like bracelets, pendants, or earrings. This is a great way to dress up a casual hoodie and showcase your personality. When selecting a hoodie, consider the sleeve length. A hoodie with long sleeves that can be rolled up is ideal for an oversized look. Look for cuffs on the hoodies you try on, as these make them easier to fold. If you want a flattering fit, wear hoodies labelled as oversized or choose one that's two sizes larger than your usual size. Neutral coloured hoodies are versatile options that work with almost any colours in your wardrobe. Choose a shade that expresses your personal style and consider what colours you already have in your wardrobe. For example, if you have pastels in your wardrobe, choose a grey or black hoodie to create contrast. Oversized hoodies offer effortlessly stylish looks that don't require much thought. They let accessories shine, can be dressed up or down for any occasion, and provide comfort during various activities. Oversized hoodies are a popular fashion trend that offers a relaxed and comfortable look. Choosing the right size can be tricky, but considering key factors such as desired fit level, fabric type, and balancing loose tops with fitted bottoms can help. A well-fitted oversized hoodie can add to your style, making it essential to consider personal preference and style when selecting one. When it comes to oversized hoodies, don't be afraid to get creative and have fun with your wardrobe. You can mix and match different pieces to create one-of-a-kind outfits that showcase your personal style. To find the perfect fit, measure around the fullest part of your chest, which is the key measurement for determining hoodie size. ****SIZE CONVERSION CHART** | OUR SIZE | WOMENS UK SIZE | MENS UK SIZE |** --- | --- | --- | | X SMALL | 6-8 | 36" | | SMALL | 8-10 | 38" | | MEDIUM | 10-12 | 40" | | LARGE | 12-14 | 44" | | X LARGE | 16-18 | 48" | ****GARMENT MEASUREMENTS** | OUR SIZE | SLEEVE LENGTH | CHEST WIDTH | LENGTH |** --- | --- | --- | | X SMALL | 59cm | 56.5cm | 69cm | | SMALL | 59cm | 59cm | 70cm | | MEDIUM | 60cm | 64cm | 71cm | | LARGE | 60cm | 69cm | 72cm | | X LARGE | 61cm | 71.5cm | 73cm | To ensure the best fit, take your measurements and compare them to our size chart. Keep in mind that all measurements are laid flat. If you've used our hoodie size calculator, don't worry if it recommended a Small or XX-Large - understanding hoodie sizing can make a big difference in your comfort and style. Our guide will help you interpret the results and find the perfect fit for your oversized hoodie. Hoodie sizing can vary significantly across brands, but there are general guidelines and specific measurements for men's and women's hoodies. For men's hoodies, which tend to be slightly larger due to broader shoulders and chest sizes, the following chart is useful: SizeChest (inches)Waist (inches)Height (cm) Small36-3830-32160-170 Medium40-4234-36170-180 Large44-4638-40180-190 X-Large48-5042-44190+ Women's hoodies often fit more fitted, particularly around waist and chest. Here's a general women's hoodie size chart for reference: SizeChest (inches)Waist (inches)Height (cm) Small32-3426-28150-160 Medium36-3830-32160-170 Large40-4234-36170-180 X-Large44-4638-40180-190 X-Large48-5042-44190+ Those who prefer measurements in cm can cross-reference their height and chest measurements with US sizing chart: SizeChest (cm)Height (cm) Small86-91150-160 Medium96-102160-170 Large106-112170-180 X-Large116-122180-190XX-Large127-132190+ When looking for a hoodie, your ideal size depends on chest measurement and personal preference. If you want a relaxed fit, consider sizing up; for a more fitted look, stick to true size based on the hoodie size chart. Focus on chest measurement as primary indicator of fit. Measure across fullest part of your chest and compare with results to determine size. Consider height and waist too, which can influence overall look and fit. Using a hoodie size calculator or consulting charts can help find accurate size. Given article text here Looking forward to seeing everyone at the meeting tomorrow and discussing our strategies is important because a well-fitting hoodie brings both warmth and style. However, choosing the right hoodie size can be tricky—too loose it may look sloppy, too tight it could restrict movement. To help you choose the right fit, we've created the ultimate hoodie size chart. By understanding your body measurements and knowing what to look for in hoodie sizing, you can ensure you get the perfect fit that looks and feels great. A hoodie that's too big might look like you're swimming in it, while a hoodie that's too small might feel restrictive. Getting the correct size ensures that your hoodie will keep you comfortable: A well-sized hoodie offers a relaxed, cozy fit without being too tight or too loose. Enhance your look: Whether you prefer an oversized, relaxed, or more fitted style, the right size will help you achieve the look you want. Allow easy layering: The correct fit allows you to layer your hoodie comfortably over or under other clothing. Before you dive into buying your next hoodie, it's important to know how to measure yourself properly and understand the sizing options. Hoodie Size Chart Below is a general hoodie size chart that helps you determine the best fit based on your measurements. Remember, sizing can slightly differ between brands, so always check the specific brand's chart when possible. SizeUS Chest (inches)Waist (inches)Hips (inches)Height (inches)Weight (lbs) XS 0-2 31-32 23-25 27-30 33-35 58-60 S 4-6 34-36 26-28 29-32 37-40 61-64 M 8-10 37-39 31-33 33-36 41-44 65-68 L 12-14 40-42 35-37 37-40 45-48 69-72 XL 16-18 43-45 38-40 41-44 49-52 73-76 XXL 20-22 46-48 41-43 45-48 53-56 77-80 Hoodie Selection: Understanding Your Options Choosing the Right Hoodie Fit ----- Various fits are available to cater to individual styles and preferences. The most common types include: * Regular/Fitted Fit: Ideal for those who prefer a classic look with comfort. * Relaxed Fit: Suitable for a laid-back, casual style. * Oversized Fit: Best for comfort and trendy streetwear looks. * Slim Fit: Fitted around the body and arms for a sleeker silhouette. Hoodie Fabrics ----- The fabric of your hoodie can significantly impact its fit and comfort. Some popular fabrics include: * Cotton: Soft, breathable, and comfortable for mild weather. * Polyester: Durable and moisture-wicking, perfect for activewear or slightly warmer weather. * Fleece: Warm and soft, ideal for cold weather. * Blended Fabrics (Cotton-Polyester): Offers a balance of softness, durability, and stretch. * French Terry: Lightweight, breathable, and moisture-wicking for warmer days. Styling Your Hoodie ----- To make the most of your hoodie, try these styling ideas: * Casual Looks: Pair with joggers or jeans for a comfortable outfit. * Layering: Wear under a jacket or coat for extra warmth and style. * Street Style: Combine an oversized hoodie with high-waisted jeans or leggings and chunky sneakers for a trendy look. * Dress It Up: Layer your hoodie under a blazer for a chic, casual work-from-home appearance. Before purchasing a hoodie, consider the season and weather you plan to wear it in, as well as how you'll layer it over other clothing. To ensure a comfortable fit, check your regular size chart and opt for a slightly larger size if needed. A well-fitting hoodie should balance style, comfort, and fabric quality to suit your personal preferences. Whether you prefer a fitted, relaxed, or oversized silhouette, selecting the right size will significantly impact how it looks and feels. Medium-sized individuals with a preference for oversized hoodies tend to opt for Double Extra Large sizing, which measures 127 cm in chest area and 116.84 cm in waist area. These XXL hoodies are substantial garments that can be used as blankets by smaller children or people of shorter stature. They come in various colors and patterns at shopping malls and online retailers. Standard hoodie sizes include Small (32" chest, 33" waist), Medium (38" chest, 32" waist), Large (35" chest, 36" waist), Extra Large (42" chest, 38" waist), and Double Extra Large (50" chest, 46" waist). These sizes allow for the creation of mockup designs with precise dimensions. For business settings, a simple, professional-looking hoodie is recommended. Choosing a size that fits comfortably is essential to projecting confidence. In Adobe Photoshop, it's advised to set up 300 pixels on every inch of a hoodie print design, while in Adobe Illustrator, similar guidelines apply for crisp-looking prints. The ideal fit for a hoodie depends on individual body measurements. A good rule of thumb is to select a size that isn't too baggy or too tight. Extra Large sizes range from 42 inches in chest area and 38 inches in waist area. Two times larger than the ideal size can result in an oversized, but warm, garment. Medium hoodies measure 38 inches in chest area and 32 inches in waist area, while the average size falls around the Medium or Large category. Hoodie thickness is measured from one underarm to the other, typically between 6.5 oz to 10 oz, depending on quality standards. A suitable weight range ensures optimal warmth and comfort in chilly conditions, with fabrics above 6 oz considered ideal for thickness. Cotton remains a top choice material for hoodie production.