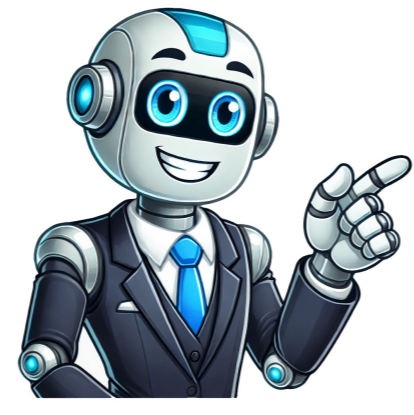


I'm not a bot



Great northern popcorn machine instructions

Popcorn Machine Owner's Manual For Great Northern Popcorn Company Models: GNP40048 6000 Roosevelt Full Popper 6005 Lincoln Full Popper 6010 Roosevelt Top 6015 Lincoln Top 6030 GAP FULL PRINCETON 6035 GAP FULL PADUCAH 6040 GAP FULL PASADENA 6045 GAP TABLE PRINCETON 6050 GAP TABLE PADUCAH 6055 GAP TABLE PASADENA Copyright 2006 DTX International All Rights Reserved Models Our database features more than 19 Instruction Manuals and User Guides for Great Northern Popcorn Kitchen 6300 Vortex Cotton Candy Machines 7976 Frosty Keg Kegerators 7975 Frosty Keg Kegerators 6301 Vortex Cotton Candy Machines 12oz Commercial Popcorn Popper Owner's Manual Copyright © 2015 DTX International All Rights Reserved Copyright © 2015 DTX International All Rights Reserved Pop Heaven CLEANING AND MAINTENANCE CAUTION After popping cycle is complete, the kettle will be very hot. Use extreme care when handling. Remember to turn the pop, or heat switch to the OFF position after the completion of the pop cycle. Unplug the unit BEFORE removing the kettle from the hanger. Use caution not to bump the warming lamp bulb during kettle removal. To maintain quality taste and popping condition in your popper, we recommend that you thoroughly clean the kettle after 3 to 4 uses or before prolonged periods of storage. Turn all switches OFF (I, II & III) and unplug the popper from the outlet. Allow the popper to thoroughly cool before cleaning. Clean all surfaces with a damp cloth. CAUTION: DO NOT immerse the kettle or any other part of the popper in water. Do not use abrasive cleaners on any part of your machine. CAUTION: HOT KETTLE!!! Handle with oven mitts. Keep children a safe distance from popper during procedure. For consistent and easiest maintenance, use a damp sponge to clean up the main unit, including the body and glass surfaces after each use. We strongly recommend tidying up the floor of the machine and the old maids drawer to ensure no food spoilage can occur. Order Now - For Immediate Delivery GreatNorthernPopcorn.com Any other servicing should be performed by an authorized service technician. Old Fashioned Gumball Machine MODEL: 6260 Gumball Machine with Stand 6265 15 Inch Gumball Machine 6270 11 Inch Gumball Machine ASSEMBLY & INSTRUCTIONS Copyright 2011 DTX International