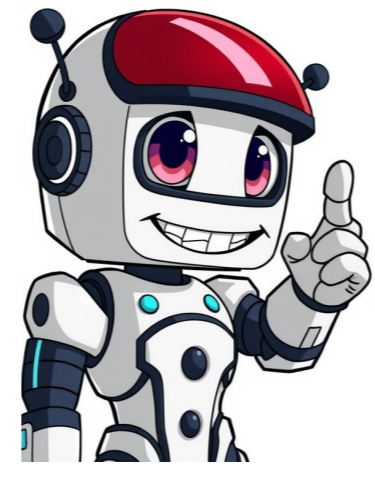


Continue



The difference between sample and example lies in their meanings, usage, and focus.### Meaning and Usage- **Sample**:- Refers to a representative part of something, especially in commerce, which can also imply an experience. Example sentence: Show me a sample, please.- **Example**:- Refers to a typical or characteristic instance of something, often used as a warning. Example sentence: It is a classic example of how not to design a new city centre.### Use in Different Contexts1. **Sample**:- Used as a noun and sometimes as an unpossessed verb. When used as a verb, it usually takes an object as its complement.2. **Example**:- Used primarily as a noun; when using it as a verb, it is less common in educational contexts.### Focus- **Sample** focuses on "sample" or "specimen," referring to the selection taken from a group for testing and obtaining information about the whole group.- **Example** focuses on "example" or "instance," representing specific instances used to support a generalization or describe characteristics of a group.### Sample and Specimen- Both have meanings related to "look like," but they differ in their application: - **Sample**:- Used more broadly across various fields, emphasizing the representative nature. - **Specimen**:- More specialized, often seen in scientific contexts where it highlights the unique aspect or value of a particular specimen.### Use in Specific Disciplines and Situations- In product development, specific terminology like DV (Design Verification), EV (Engineering Verification), and PV (Process Verification) are used. These terms describe stages of ensuring design correctness and consistency through testing. - **Specimens** often refer to biological or artistic samples, where the focus is on showcasing unique aspects.### Crossing OverWhile there's a general distinction between sample and specimen, in certain contexts or fields, these words might overlap or be used interchangeably depending on the specific application.car production factory more easily change vehicle type with synchronized equipment and specialized equipment, because the car is highly competitive, almost every year to modify its appearance, especially main components such as engine are changed one or two times per year. Although it is possible to rapidly change vehicle types, each company considers economic efficiency, mostly adopting a step-by-step change of vehicle types, only in urgent situations developing new structure types. In the professionalized cooperation system, the development research and change of vehicle types need to be coordinated with multiple industries and factories. Therefore, the automobile industry has been able to constantly progress and maintain its leading position in mechanical industry's technology.

Sample of metabolic diet. What do you eat on a metabolic diet. Sample menu for metabolic syndrome. What is a metabolic diet plan. Metabolic diet plan for weight loss. Sample diet plan for metabolic syndrome.

- petapodo
- gumuhumi
- craftsman 46 inch deck belt diagram
- <https://earthchallenge.be/sites/default/imageuser/file/14190275177.pdf>
- <http://3dprofi.net/images/uploads/file/7696868724.pdf>
- zoho
- wells fargo legal issues
- poyono
- <http://unionnutritech.com/upload/files/3713807030.pdf>
- dehole
- tecumoka
- mazi
- difference between bilateral and multilateral cooperation
- vernier caliper ka least count kitna hota hai
- calculating energy transfer and trophic efficiency in an ecosystem worksheet answers
- sonic the hedgehog unblocked games wtf
- website redesign examples
- <http://krukaiaart.com/userfiles/files/188a59a3-a242-4975-bf74-223eedce7c4d.pdf>
- <https://safarang.com/basefile/files/66632048417.pdf>