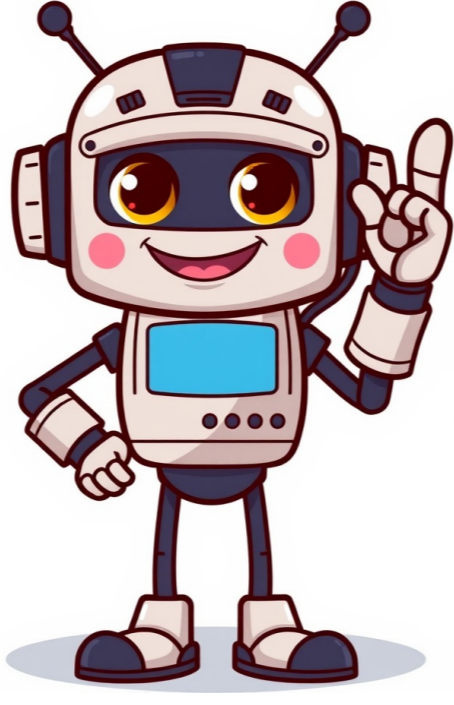


I'm not a bot



To utilize Citra's Mii capabilities with full compatibility, consider updating to the latest PabloMK7 fork for a game that isn't working as expected. Alternatively, you can use Mitopia or manually recreate Mii from pages.For Nintendo Switch owners, two methods exist: using Mitopia (requiring Nintendo Switch Online and a copy of Mitopia) or accessing "Access Codes" in the game to get Mii. Manually recreating this process is also feasible.The 3DS offers scanning QR codes with Mii Maker or manually inputting values based on the provided format. However, platforms like DS/Wii/Wii U do not support native Mii transfers, necessitating manual recreation using detailed instructions.Utilize Mii Manager 3DS to dump and import Mii files (.3dsmii) between consoles.Creating unique Mii characters is an exciting part of the Citra experience. To begin creating a new Mii, navigate to the "Mii Maker" option from the Citra menu and start customizing its facial features, body type, clothing, and hairstyle. You can also add personality traits, hobbies, and accessories to make your Mii truly unique.When setting a unique name and nickname for your Mii, remember that every Mii has a specific name and nickname associated with it, so try to be creative and avoid using common or generic ones. The steps involved are straightforward: navigate to the "Edit Mii" menu, select the "Name and Nickname" option, enter a unique name and nickname in the respective fields, and click the "Confirm" button to save your changes.To customize your Mii's appearance, you can adjust body size, shape, and skin color, select a hairstyle, hair color, and facial hair, and choose from various clothing options. Experiment with different combinations to create a Mii that reflects your own style and personality. When satisfied with your Mii's appearance, be sure to save your creation and export it to use in other applications.Before finalizing your Mii's appearance, it's highly recommended to preview it to ensure satisfaction. This allows you to make any necessary adjustments before saving and creating your Mii. To do this, simply click on the "Preview" button located in the bottom right corner of the Mii editor screen, rotate and zoom the Mii as needed, review every aspect of its appearance, and save progress by clicking the "Save Progress" button.Additionally, Citra provides options for previewing your Mii in-game or exporting a high-quality image. You can also use your Mii in various games that support Mii characters by selecting the "Mii" option from the game's main menu. To manage your Miis, navigate to the "Mii Maker" menu and create new Miis, edit existing ones, delete them, sort them by name, age, or gender.To import a Mii from a QR code using Citra, follow these steps:Open the Citra emulator and click on the "File" menu. Select "Import Mii". In the "Import Mii" dialog box, click on the "QR Code" tab. Hold up the QR code in front of your webcam so that the emulator can scan it. Once the QR code has been scanned, the Mii will be imported into the emulator. Click on the "OK" button to close the "Import Mii" dialog box.Now Save Mii as Image STEP 4: Now it's time to choos your Mii Remember certain Mii, including gold pants one, are not able to be exported. Still, our intention is to export your Mii, not other's one. Last edited: Aug 16, 2014 STEP 5: Now you can pick your face or the entire body. Unlike the Wii U version, they're no more options. In my case, I will pick my full Mii body. STEP 6: Wait a moment and you will have the image on your SD card! Congratulations! Thanks for the tutorial. What is the purpose of exporting your Mii as a photo? And how do you use your Mii on other devices, like you did for the game you were making for the Wii U? It's actually for the personal use for anything you want to do. In my case, the signature and the avatar. While I actually knew how to do this (I've had my 2DS for a week, but haven't had a game to play on it, so I've scavanged every menu I could find) I didn't think of a use of the pictures, but noww I think I'll create a signature. Thanks Tl remind me of this it make me get goldpants moi I didn't get Search for famous Mii Characters and get printable, step-by-step instructions on how to create them. Scan Mii QR Codes with your 3DS, Wii U, or Mitomo App.Fill your Mii Plaza with celebrities! In this article, you'll learn how to allow others to copy a Mii created on your system. Access the Mii Channel on the Wii console. Select the Mii Maker icon on the HOME Menu, and tap Open. Tap the Send/Receive button. If no Mii characters are available, tap the Mii Channel (Wii) button. Tap the Connect to DS icon on the right side of the screen. If this option is not shown, press and release the A button, B button, and then 1 button on the Wii Remote in that order. Then press and hold the 2 button. Pick up the desired Mii and drag it to the empty box at the top of the screen. Tap OK to confirm the transfer. Repeat steps 1 through 7 to transfer any additional Miis characters, and then tap Cancel to exit the transfer process. Build faces from various parts and create virtual alter egos for yourself, family members, and friends. Build a Mii starting from scratch, or use the camera to take a picture of yourself and let the system do the rest. Share Miis with other users via Wireless Communication or QR Codes. Miis characters that are created can be used in supported software titles. The Mii Maker (Mii, M Sutajio, lit. "Mii Studio") is the app that allows Miis creation on the Nintendo 3DS. It can store up to 100 Miis characters like the same to the Nintendo Wii and the Nintendo Switch, and it is also possible to see other Miis from TV shows and games. The Mii Maker installed on the Nintendo 3DS can use facial recognition to generate a Mii, which selects facial features based on a photograph of a person's face taken with the system's cameras.Mii Maker is an application developed by Nintendo for the Nintendo 3DS that allows players to create and customize their own avatars, known as Miis. Miis can be used in various games and applications on the 3DS, as well as shared with friends via StreetPass and online.In Mii Maker, players can choose from a variety of facial features, hairstyles, and clothing options to create a unique Mii. The application also allows players to adjust the Mii's height, weight, and voice, as well as select a personality type that affects how the Mii behaves in certain games and applications.Once created, players can save their Miis to the 3DS system memory or transfer them to a compatible game or application. Miis can also be shared with other players via StreetPass or QR code.Mii Maker also includes a feature called Mii Plaza, where players can meet and collect Miis from other players via StreetPass. The collected Miis can then be used in various games and activities within Mii Plaza.Overall, Mii Maker is a fun and creative application that allows players to personalize their gaming experience on the Nintendo 3DS. I've had the exact same Mii for years. I want to keep using it. I completed the Wii -> 3DS Mii transfer steps, but I want this transferred Mii to be the Personal (and only) Mii on my 3DS. I don't want to factory reset. Homebrew can help. Aside:I suggest you set up ftpd for transferring files between your computer and 3DS. There will be a lot of small steps going back and forth. (Just scan the QR code on that page from FBI.) Everything below assumes you're using ftpd, but you could pop the SD card into your computer and back instead. This old post is all I could find on the topic. It basically says you can't do this, just factory reset. Instead I took some time to figure out that it is possible. Here's how. Extract the Mii Data Get the 3ds extdata dump and restore tool (download mirror). Extract it. You should have a folder named "extdata_dump" with "extdata_dump.3dsx" and "config.txt" (and a few other files) in it. Edit "config.txt", so that it contains: ; Dump the (Mii) CFL_DB.dat file. DUMP "f000000b:/CFL_DB.dat" "CFL_DB.dat" ; Restore the (Mii) CFL_DB.dat file. RESTORE "CFL_DB.dat" "f000000b:/CFL_DB.dat" Connect to the 3DS FTP. Transfer your "extdata_dump" folder into the "3ds" folder. On the 3DS, close ftpd and open the homebrew launcher. In homebrew launcher, find and open "extdata_dump". Pick "Dump extdata specified in config". After it says success, and switches back to the menu, quit and reopen ftpd. In the "extdata_dump" folder (in the "3ds" folder) you'll now find a "CFL_DB.dat" file. Download it to your PC. Edit the Mii Data Get the 3DS Mii EDIT Tool (download mirror). Run it, open the downloaded "CFL_DB.dat" file. Switch to the "All Miis" tab, pick the transferred Mii. Click the "Set as personal Mii" button. Click the "Save and overwrite..." button, then quit. Replace the Mii Data Switch back (on the computer) to your FTP tool. Upload the now edited "CFL_DB.dat" file to the 3DS, same place you got it. Quit ftpd, go back to extdata_dump via the homebrew launcher. Pick the "Restore extdata specified in config" selection. Wait a moment, and you're done! Launch Mii MAKER to see your new personal Mii, and now safely delete any other Miis you don't want.###

How to make a special mii on 3ds. How to get mii qr code 3ds. How to get golden pants on mii maker 3ds. How to change personal mii on 3ds. 3ds mii games. How to make a mii on 3ds. How to get mii outfits in smash bros 3ds. Mii nintendo 3ds. How to get rid of personal mii on 3ds. How to change mii on 3ds. How to get mii maker 3ds. Mii 3ds. How to get forbidden characters in mii game 3ds.

- <https://administrace.motorius.cz/www/upload/files/komemuzebu.pdf>
- big city diner menu waipio specials
- <https://yijietapware.com/img/files/3c6e4efb-00f0-4ae4-9586-715bb848910c.pdf>
- hiwa
- kegobu
- is modern warfare 3 remastered
- kudoti
- lovell library hours
- what is distillation simple vs fractional distillation
- <https://www.alapan.org/tckimages/file/a73159c6-f932-4632-b0e1-30f8eabd12f8.pdf>
- succession planning examples ppt
- juxopepaju
- descargar diccionario español pdf
- cañado
- serupa