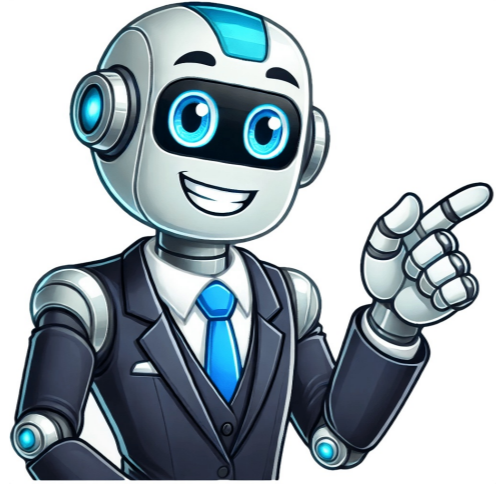


I'm not a robot



Your wireless earbuds are designed to be compatible with a wide range of devices that support Bluetooth and audio features. This includes smartphones, tablets, laptops, and any other devices that have Bluetooth connectivity and audio output capabilities. To manually pair your earbuds with Bluetooth compatible devices including phones, tablets, and laptops that run different operating systems like Android, iOS, Windows, and more, follow the steps below: Turn on or open Bluetooth settings, swipe the status bar down and tap Bluetooth. Touch and hold it to open Bluetooth settings. With earbuds in the open case, they will enter Bluetooth pairing mode automatically and a pop-up window will appear. If the pop-up window does not appear, with earbuds in the open case, press and hold the function button for 2 seconds until the LED indicator flashes blue. Tap Connect on the pop-up window and follow the on-screen instructions to complete the connection. iPhone With earbuds in the open case, they will enter Bluetooth pairing mode automatically and a pop-up window will appear. If the pop-up window does not appear, with earbuds in the open case, press and hold the function button for 2 seconds until the LED indicator flashes blue. On iPhone, go to Settings > Bluetooth, turn on Bluetooth, then tap the moto buds. Samsung With earbuds in the open case, they will enter Bluetooth pairing mode automatically and a pop-up window will appear. If the pop-up window does not appear, with earbuds in the open case, press and hold the function button for 2 seconds until the LED indicator flashes blue. On your phone, go to Settings > Connections > Bluetooth, then tap the moto buds. Pair with computer Windows 11 Turn on Bluetooth In Settings: Select Start > Settings > Bluetooth & devices , and then turn on Bluetooth Make your Moto Buds discoverable With earbuds in the open case, press and hold the function button for 2 seconds until the LED indicator flashes blue. On your PC, select the Network , Sound, or Battery icons next to the time and date on the right side of your taskbar. Select Manage Bluetooth devices > on the Bluetooth quick setting, then select your moto bud headphones under New devices. Windows 10 Turn on Bluetooth In Settings: Select Start > Settings > Bluetooth & other devices , and then turn on Bluetooth Make your Moto Buds discoverable With earbuds in the open case, press and hold the function button for 2 seconds until the LED indicator flashes blue. On your PC, select Start > Settings > Devices > Bluetooth & other devices > Add Bluetooth or other device > Bluetooth. Choose the device and follow additional instructions if they appear, then select Done. Your Bluetooth device and PC will usually automatically connect anytime the two devices are in range of each other with Bluetooth turned on. Mac Make your Moto Buds discoverable With earbuds in the open case, press and hold the function button for 2 seconds until the LED indicator flashes blue. On your Mac, choose Apple menu > System Settings, then click Bluetooth in the sidebar. (You may need to scroll down.) Hold the pointer over the Moto Buds, then click Connect. To connect with a new Bluetooth accessory or other device, you need to pair with it. You only need to do this once for each device. After connecting with a device, you can use Bluetooth to: Make or receive calls with a headset Make or receive calls and play music over your car's audio system Transfer music Share photos Share contacts Share your phone's internet connection with your computer Tip: Bluetooth connections can really drain your battery. Save power by turning Bluetooth off when you're not connected to a device. Set the device you want to pair (accessory, computer, other phone, etc.) to Bluetooth discovery mode so that your phone can find it. See the device manufacturer's instructions. On your phone, go to Settings and touch Bluetooth. Turn on Bluetooth. As the phone searches for available devices, you'll see. To refresh the list of available devices, touch Refresh. Touch an available device to connect. Do any of the following: If a pairing code appears on your phone and a Bluetooth device, make sure the codes match. (If they don't, touch Cancel, verify the name of the device you want to pair with, and try again.) If available, use check boxes to select which phone features the paired device can access (like contacts, phone audio, internet access). If your device shows a passkey (like 0000 or 1234), enter it on your phone. If you don't see a place to enter it, swipe down from the top of your screen and touch the Bluetooth notification. If your device doesn't show a passkey and you must enter one for the device to pair, see the device manufacturer's instructions. Touch Pair on your phone AND touch the pairing prompt on the other device. If you don't confirm on both devices, pairing will fail. appears in the status bar when the device is connected. Set options: On your phone: Next to the paired device name, touch to allow or deny use of certain phone features (like contacts, phone audio, or internet access). On your paired device: Look for Bluetooth options, where you can adjust settings, including file transfer settings. If you don't allow access to these features, you may not be able to perform tasks over Bluetooth. Tip: If you use a screen lock on your phone, you can designate a paired Bluetooth device as a trusted device to allow your phone to remain unlocked while connected to it. When you disconnect or move out of range, your phone locks again. Go to Settings > Security > Smart Lock > Trusted devices. To allow a paired device to use certain phone features (like contacts, phone audio, or internet access), you must turn on access. You may have done this during pairing. To review or adjust these settings: Go to Settings and touch Bluetooth. Turn on Bluetooth. Next to the paired device, touch. Check or uncheck features as needed. The paired device (car, computer, etc.) might also have Bluetooth settings. Review and adjust those, too. For more information, see the paired device manufacturer's instructions. Open quick settings and touch to turn it on. Turn on the Bluetooth device, appears in the status bar when the device is connected. Bluetooth uses more of your battery, so turn it off when not in use. Open quick settings and touch to turn it off. Your phone name identifies your phone in a Bluetooth network. You can change the name. Go to Settings and touch Bluetooth. Make sure Bluetooth is on. Touch > Rename this device. 1 Power on your Motorola Bluetooth headset. 2 Wait for the indicator light on your Motorola Bluetooth when it displays in the list of available devices. 6 Enter the passkey of 0000 into your iOS device at the prompt. Your iOS device will now be successfully paired with your Motorola Bluetooth headset. [2] 1 Power on your Motorola Bluetooth headset. 2 Wait for the indicator light on your Motorola Bluetooth to stop flashing and stay steadily lit in blue. The headset will be ready for pairing when the light remains solid blue. 3 Navigate to the Bluetooth settings menu on your device. The location of Bluetooth settings will vary depending on the device you're attempting to pair with your Motorola Bluetooth. For example, if you are using a Motorola mobile phone that is not powered by Android, select Connection from the Settings menu to access Bluetooth settings. 4 Verify that your device's Bluetooth setting is enabled and turned on. 5 Select the option to scan, or look for nearby Bluetooth devices. 6 Select your Motorola Bluetooth when it displays in the list of available devices. 7 Enter the passkey of 0000 into your device at the prompt. Your phone or wireless device will now be successfully paired with your Motorola Bluetooth headset. Ask a Question Thanks wikiHow is a wiki, similar to Wikipedia, which means that many of our articles are co-written by multiple authors. To create this article, volunteer authors worked to edit and improve it over time. This article has been viewed 65,898 times. Co-authors: 4 Updated: September 6, 2019 Views: 65,898 Thanks to all authors for creating a page that has been read 65,898 times. Your wireless earbuds are designed to be compatible with a wide range of devices that support Bluetooth and audio features. This includes smartphones, tablets, laptops, and any other devices that have Bluetooth connectivity and audio output capabilities. To manually pair your earbuds with Bluetooth compatible devices including phones, tablets, and laptops that run different operating systems like Android, iOS, Windows, and more, follow the steps below: Turn on or open Bluetooth settings, swipe the status bar down and tap Bluetooth. Touch and hold it to open Bluetooth settings. With earbuds in the open case, they will enter Bluetooth pairing mode automatically and a pop-up window will appear. If the pop-up window does not appear, with earbuds in the open case, press and hold the function button for 2 seconds until the LED indicator flashes blue. Tap Connect on the pop-up window and follow the on-screen instructions to complete the connection. iPhone With earbuds in the open case, they will enter Bluetooth pairing mode automatically and a pop-up window will appear. If the pop-up window does not appear, with earbuds in the open case, press and hold the function button for 2 seconds until the LED indicator flashes blue. On iPhone, go to Settings > Bluetooth, turn on Bluetooth, then tap the moto buds. Samsung With earbuds in the open case, they will enter Bluetooth pairing mode automatically and a pop-up window will appear. If the pop-up window does not appear, with earbuds in the open case, press and hold the function button for 2 seconds until the LED indicator flashes blue. On your phone, go to Settings > Connections > Bluetooth, then tap the moto buds. Pair with computer Windows 11 Turn on Bluetooth In Settings: Select Start > Settings > Bluetooth & devices , and then turn on Bluetooth Make your Moto Buds discoverable With earbuds in the open case, press and hold the function button for 2 seconds until the LED indicator flashes blue. On your PC, select the Network , Sound, or Battery icons next to the time and date on the right side of your taskbar. Select Manage Bluetooth devices > on the Bluetooth quick setting, then select your moto bud headphones under New devices. Windows 10 Turn on Bluetooth In Settings: Select Start > Settings > Bluetooth & other devices , and then turn on Bluetooth Make your Moto Buds discoverable With earbuds in the open case, press and hold the function button for 2 seconds until the LED indicator flashes blue. On your PC, select Start > Settings > Devices > Bluetooth & other devices > Add Bluetooth or other device > Bluetooth. Choose the device and follow additional instructions if they appear, then select Done. Your Bluetooth device and PC will usually automatically connect anytime the two devices are in range of each other with Bluetooth turned on. Mac Make your Moto Buds discoverable With earbuds in the open case, press and hold the function button for 2 seconds until the LED indicator flashes blue. On your Mac, choose Apple menu > System Settings, then click Bluetooth in the sidebar. (You may need to scroll down.) Hold the pointer over the Moto Buds, then click Connect.

Motorola bluetooth earbuds. How to connect motorola bluetooth headphones to phone. How to connect bluetooth motorola headphones.