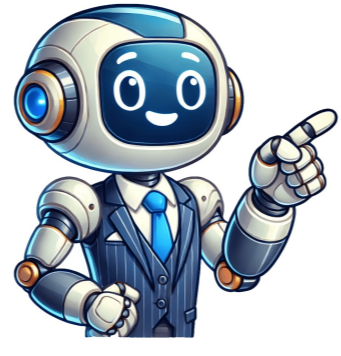


Click to verify















## Nwea assessment test

Our approach stands out from other websites that offer quizzes. Instead, we provide comprehensive MAP test PrepPacks that mirror the actual exam's structure, scoring, and difficulty progression. These PrepPacks come with full-length simulations to help students prepare effectively. You can access our full MAP PrepPacks by downloading them from our website. We also have a detailed MAP Test Prep Guide available as a PDF download. In grammar, question words like "what" often precede auxiliary verbs, such as "is." Therefore, when forming questions that start with "what," a question mark should be used at the end of the sentence. Our platform offers a range of features designed to support students and families. You can create multiple profiles for each child, track their progress individually, and tailor your approach to suit their needs. Our MAP Growth Kindergarten Prep and Full MAP Growth 1st Grade Prep resources are available on our website. By creating an account, you can access all the content we have developed by experts in the field. This includes comprehensive material from across our platform. Today was a wonderful day, filled with various community activities. In the morning, many kids from our school volunteered to help out. One class helped tidy up the town library, another planted flowers in a public garden, and my class served lunch at a home for the elderly. When we returned to school, the principal commended us on being valuable members of society from an early age. After school, I visited my neighbor Jenna's place. Her big brother had made pizzas for us, which we enjoyed eating in a tent set up in their living room. It was indeed a fun day. A statement about the passage could be verified as true if it directly corresponds to information presented within the text. In this case, it can be confirmed that the narrator's class helped serve lunch at a home for the elderly, making option C the correct answer. The top view of an object is essentially what you would see if you looked straight down on it from above. This 2D representation provides crucial information about its structure and layout. One layer deep, therefore it cannot be solid (A) or (E). The top view shows that all the cubes lie in one layer when viewed from above, ruling out solid (D), which is two layers deep. Since the front view matches the front of the 3D shape on the page, it can only be solid (B), eliminating options A, E, and D. Therefore, the correct answer is (B). Peanuts may cause allergic reactions such as itchiness, sneezing, and asthma. The allergy causes the immune system to overreact, which is the body's method of self-defense against potential harm. It is recognized as one of the most severe food allergies because of how common, persistent, and severe the reaction can be. This passage discusses peanut allergies and how the human body reacts to them. The main idea of this passage is that peanuts may cause allergic reactions such as itchiness, sneezing, and asthma due to an overreacted immune system, which recognizes it as one of the most severe food allergies. One might initially think the author uses hyperbole when writing about finding eggs in a single hole, but the estimate is actually a realistic representation. The author aims to convey that many eggs can be found in one hole without exaggeration. This approach contrasts with an actual exaggeration, which would imply impossibility or extreme likelihood. There are no metaphors in the passage either, as comparisons of size do not constitute metaphors. Finally, the passage is not an allegory, and there's no evidence to suggest it's an allegory. The key difference between the MAP Growth Test and the STAAR Test lies in their educational purposes and features. The NWEA MAP Test is an adaptive assessment that measures academic growth, while the STAAR Test is a standardized state assessment. Understanding these differences is crucial for parents and educators to choose the right assessment for their child's school requirements. The MAP Growth Test is aligned with the Common Core State Standards and provides a dynamic approach to measuring academic progress. The test adjusts the difficulty of questions based on the student's responses in real time, allowing it to accurately measure academic growth. This adaptive interaction prevents students from feeling discouraged by encountering questions beyond their understanding and provides a detailed picture of what they know. Scores for the MAP Growth Test are reported using the RIT scale, which measures progress from kindergarten through high school. The score indicates the level of questioning that a student is estimated to answer correctly 50% of the time. This system allows schools and students to measure progress and academic growth from year to year. In contrast, the STAAR Test is not adaptive and focuses on evaluating specific state education standards and overall performance. Understanding these differences can help parents and educators choose the right assessment to support their child's academic growth effectively. The NWEA Measures of Academic Progress (MAP) test is designed to assess a student's academic proficiency and growth over time, offering valuable insights for educators and parents. To excel on this computer-adaptive assessment tool, students should focus on developing their reading comprehension skills, mathematical understanding, language usage, and scientific knowledge. The test's adaptive nature adjusts the difficulty level based on the student's responses, making it an effective way to pinpoint proficiency levels. The MAP test typically covers four main areas: 1. Reading: Assesses reading comprehension skills through various types of texts. 2. Mathematics: Evaluates mathematical principles, computational skills, and conceptual understanding. 3. Language Usage: Tests English grammar, syntax, writing conventions, punctuation, capitalization, sentence structure, and word usage. 4. Science (available in some versions): Assesses scientific concepts, including physical sciences, life sciences, earth and space sciences, and scientific inquiry. One of the MAP test's key benefits is its ability to measure academic growth over time, allowing educators to track progress and adjust instruction accordingly. First step: Select picture after Beverly cuts cake. Answer is 3rd bubble. MAP practice questions continue with a task to choose picture with most eggs. Correct answer is also 3rd row. Next, identify capital B in given equation. First letter provides the solution. For more practice, visit Testing Mom's website for expert resources and test prep. They offer over 10,000 practice questions per subtest and student success teams for any question or concern. Learn about NWEA MAP Test with their free questions and discover how to help your child succeed in school. NWEA MAP Test is developed by Northwestern Evaluation Association (NWEA), a non-profit organization that creates tests for schools to assess children's progress. The Measurement of Academic Progress (MAP) test was first created in 2000, used in over 9,500 US schools and 145 countries worldwide. It covers math, reading, language usage, and science for kindergarten through 12th grade, based on Common Core principles. MAP Tests are taken online with computer-adaptive functions that adjust difficulty level according to student answers. MAP Tests for 2nd Grade: A Comprehensive Overview The MAP Test is an assessment tool designed to evaluate a child's academic progress and learning needs. The tests provide teachers with data specific to each child, allowing them to create personalized learning plans. ##Key Features of the MAP Test \* Adaptive nature: The test adjusts to suit the child's ability in answering questions, ensuring that every student receives an accurate assessment. \* Multiple formats: Questions come in various formats, such as multiple-choice and drag-and-drop options, catering to different learning styles. \* Online format: The test is administered online, reducing distractions and increasing engagement. ##MAP Tests for 2nd Grade The MAP Test 2nd grade is designed for students aged seven to eight years old. It assesses academic progress in reading and mathematics, providing a comprehensive understanding of the child's learning level. ##Test Schedule \* First test: Taken at the beginning of the year \* Second test: Winter assessment to determine progress since the first test \* Third test: Spring assessment to demonstrate academic growth throughout the year ##Benefits of the MAP Test \* Evaluates current educational standard and potential for learning new information \* Can be used as a qualifier for entry into gifted programs The second-grade MAP test is a crucial assessment that measures students' intellectual capacity and readiness for the next level of academia. Schools will use the pupils' scores to determine if they are prepared for the upcoming academic challenges. This guide explains the format of the MAP Test 2nd grade, helping parents and carers understand why and when the test is taken to provide adequate support. The three sections of the MAP test include: Reading, Math, and Language. Not all schools administer all three sections, so it's essential for parents to know which parts their child will be tested on to assist with revision and preparation. The test sections are not timed, but each part should take a maximum of 60 minutes to complete. The reading sub-test assesses students' comprehension, vocabulary, and writing skills by evaluating their ability to understand written passages, extract main ideas, and comprehend words and characters. It consists of 43 questions. The math section covers algebraic thinking, computation, fractions, measurement, and geometry, with up to 53 adaptive questions that are not timed but should take around 60 minutes to complete. The language test focuses on grammar, mechanics, word usage, and the writing process, including planning, drafting, and editing written work. It also has up to 53 untimed, adaptive questions. To aid your child's preparation, create a revision plan covering all three sections and provide them with practice tests or materials to familiarize themselves with the test content and layout. This will help your child feel more confident and prepared for the assessment. As the situation permits, HSB's team, based in Minneapolis, Minnesota, is currently taking precautions due to an active tornado watch and has temporarily relocated to a safe area. We will resume our support as soon as it is safe to do so.