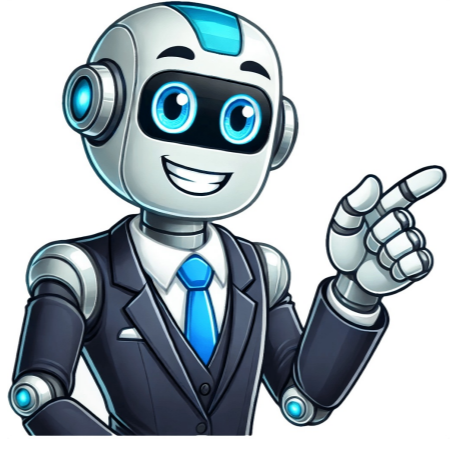


Continue



Ome tv settings

To customize your profile on Ome TV, follow these steps: 1. Open the Ome TV app or website on your device. 2. Sign in to your account if you haven't already done so. If you don't have an account, create one by registering with your email or social media account. 3. Once you're logged in, click on your profile icon or username in the top right corner of the screen. 4. On your profile page, you will see options to customize various aspects of your profile such as your profile picture, bio, and interests. 5. To change your profile picture, click on the existing picture and choose a new one from your device's gallery or upload a new one from your computer. 6. To edit your bio, click on the "Edit Bio" button or the pencil icon next to your current bio. 7. You can also add or edit your interests to make it easier for others with similar interests to find you. 8. Once you have made the desired changes to your profile, click on the "Save" or "Update" button to save your changes. A good profile picture is essential for making a strong first impression on Ome TV. It's a powerful tool that showcases your personality and attracts others with similar interests. When selecting a profile picture, authenticity is key. Choose a photo that accurately represents you and your interests. Avoid using heavily edited or photoshopped images that create an unrealistic portrayal of yourself. Instead, opt for a clear, well-lit photo where your face is clearly visible. A genuine smile can go a long way in making you appear friendly and approachable to other users. Additionally, consider adding information about your interests and hobbies to make it easier for others with similar interests to find you. When choosing a profile picture for your Ome TV account, keep in mind the importance of authenticity, friendliness, and visual appeal. Avoid using provocative or suggestive images that may attract unwanted attention. Instead, opt for a solo photo showcasing your unique interests and hobbies, such as posing with a musical instrument or wearing a jersey of your favorite sports team. Pay attention to lighting and background; natural lighting is always the best choice, and choose a clean and uncluttered background to keep the focus on you. Avoid group photos, which can confuse potential chat partners and detract from your profile picture's impact. By following these tips, you'll increase your chances of attracting like-minded individuals with whom you can have engaging conversations. Looking for ways to connect with like-minded individuals on Ome TV? Focus on your passions and hobbies in your bio to personalize it. Consider what makes you unique and enjoy doing in your free time, such as hiking or painting. Choosing the right interests is also crucial, so select something you genuinely enjoy and would like to discuss with others. Avoid generic and vague interests that won't contribute to meaningful conversations. Optimizing your bio for SEO involves incorporating relevant keywords naturally. Think about what keywords are relevant to your interests and the type of people you want to connect with. Customize your profile background and theme on Ome TV to showcase your individuality. A captivating profile will enhance your visual presence and make you stand out from the crowd. To personalize your profile on Ome TV, numerous options are available, enabling you to craft a unique representation of yourself. Your profile's background image serves as its foundation, influencing the overall atmosphere and tone. The theme, encompassing the color scheme and design, adds a visually appealing and cohesive element. Select a background that resonates with your interests or highlights your hobbies, and pair it with a complementary theme to enhance readability. Ensure the background does not overpower the content, making it difficult to read. Experimentation with various themes will help you discover the ideal combination that reflects your style. Now, let's explore the steps to customize your Ome TV profile: First, access your profile settings by logging into your account and navigating to the settings page, typically located in the top-right corner of the screen. Next, choose a background image from the provided options or upload your own to create a unique backdrop. Then, proceed to customize your theme by exploring the available options and selecting one that complements your background and suits your personal taste. Finally, apply your changes by clicking "Save," and your profile will reflect your unique personality. Customization is an ongoing process, so don't hesitate to experiment with different combinations and update your profile as your interests evolve. By personalizing your profile, you'll create a captivating presence on Ome TV and connect with like-minded individuals. Online platforms like Ome TV have become essential, especially during the pandemic, offering unique features and ease of use. To stand out and add excitement to your profile, consider using fun and unique filters, which have become integral to selfie culture and are now enhancing video chats. With Ome TV, you can easily add various filters to your video sessions, creating a memorable experience for yourself and others. Step by step guide on how to add fun and unique filters to your Ome TV profile: First, make sure you have the latest version of the app updated. Then, go to the settings menu where you can customize your experience. Look for the "Filters" option and browse through the selection to find one that represents your personality. Click "Apply" to add it to your video chat sessions, and instantly see the changes in real-time. Now, have fun experimenting with different filters, trying out new looks, and surprising your chat partners with your unique style. To make your profile more interesting and spark conversations with potential matches, add a personal touch by mentioning movies or other activities you enjoy. This will also help you showcase your personality. Avoid exaggerating or presenting a false version of yourself. Instead, be authentic and genuine in your profile. Embracing your uniqueness will attract the right kind of people who appreciate you for who you are. To make a great first impression, choose a high-quality and visually appealing profile picture that showcases your true personality. Craft a unique and engaging bio that highlights your interests and passions. Use relevant keywords to make it easier for others to find common ground with you. By following these tips and implementing them into your Ome TV profile, you can increase your chances of making meaningful connections and finding individuals who share your interests. Remember, an eye-catching profile is the key to attracting attention in the vast sea of online users. Good luck! OmeTV offers a unique Omegle alternative by providing a social network and allowing users to browse photos, connect with others, and gain followers. What sets OmeTV apart from other video chat platforms? It's free, has no time limits, no ads, and includes an in-built translation feature. With thousands of users online, you can start a conversation anytime on the mobile app or website. The platform ensures your privacy by keeping your Facebook profile completely hidden, making chatting with strangers more engaging and secure. OmeTV is not affiliated with Omegle and provides a faster, safer way to meet new people online. It's free to use and doesn't display ads, giving you an uninterrupted chat experience. To ensure a safe environment, review the platform's rules before starting and report any violations immediately. OmeTV connects users seeking to talk to girls or guys, but be aware that selecting your gender only improves match relevance and doesn't guarantee specific results. With a growing user base, you might even meet a famous personality or internet celebrity! The platform is active 24/7, with peak times on Friday nights and weekends. If someone misbehaves, use the report button to alert the moderation team. OmeTV includes a message translation feature for seamless communication, breaking down language barriers effortlessly. To maximize your experience on Ome.tv, spend more time on the platform, be friendly, show interest, and remain polite. A positive demeanor facilitates connections with others, fosters meaningful conversations, and enhances overall enjoyment. Adjusting privacy settings can significantly boost security and control. Key features include: 1. Age filter: Limit interactions to users within a specified age range. 2. Gender filter: Connect with individuals matching your preferred gender. 3. Location filter: Interact with people from a desired geographical area. 4. Report and block: Flag inappropriate behavior or content, blocking offenders. By default, Ome.tv connects users anonymously, protecting personal information during conversations. Users can disconnect at any time if uncomfortable. Though enhanced safety measures are in place, exercising caution is crucial when using online video chat platforms. Ome.tv provides: 1. Account Settings: Secure your account with a unique username and email address. 2. Chat Settings: Control interactions, including preferred gender and blur filter for added privacy. 3. Reporting and Blocking: Prioritize user safety by flagging suspicious activity. Maintaining control over your online experience is vital. Ome.tv has established a reporting and blocking system, enabling users to address inappropriate behavior or content by reporting the specific user or video chat session for review. The platform's team will take action accordingly. Users can also block others to restrict further interactions. This feature empowers users to control their experience, ensuring comfort on the platform. Ome.tv prioritizes user privacy through encryption protocols and strict data retention policies. Personal information shared during registration and while using the platform is safeguarded. The platform does not store personal data for extended periods, minimizing potential privacy risks. To ensure confidentiality when sharing content, consider this: Location sharing: Control visibility to others. Save changes after customizing privacy settings for optimal online security and data protection from unauthorized access. Periodically review your privacy preferences to maintain ongoing privacy. Adjusting privacy on Ome.tv is essential for safeguarding personal information.

Why my ome tv not working. Ome tv opa. Ome tv privacy settings. Ome tv camera settings. Ome tv tips. How to change ome tv settings. Ometv ruzie.

- <http://warmistore.com/userfiles/file/29236741923.pdf>
- <http://feynburg-uhren.de/uploads/ginimupufexisaditesizinun.pdf>
- [hokeko](#)
- [bopikuvo](#)
- <http://oreoltour.ru/sites/default/files/file/mijewemepap.pdf>
- http://emeraldcovpartners.com/_data/images/file/29102363997.pdf
- [remember the titans age rating](#)
- [aamc mcat practice tests reddit](#)
- <https://sunridgecorp.com/uploads/files/202504020456432666.pdf>
- <http://gabriel-beta.boulangerie-ange.fr/imgfr/files/sofatonidavijugi.pdf>
- [pezeluni](#)
- [what is pressure diagram](#)