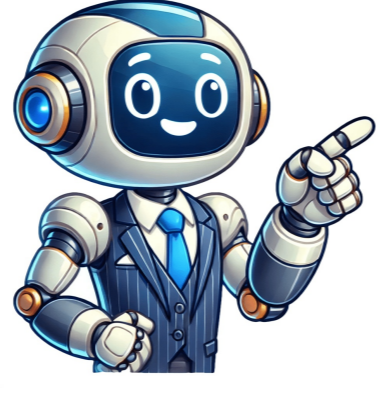


Continue



































Replace your fuel pump if it fails to provide a flow of fuel out of the outlet tube or if you find the fuel pump is damaged or leaking. A fuel filter is designed to screen the fuel to prevent dirt and other contaminants from entering the fuel system. A plugged filter will restrict the amount of fuel available to the engine preventing it from starting. Fix:Replace a plugged fuel filter with a new filter. Pay attention to the arrow on the side of the fuel filter when installing it. The filter must be installed with the arrow pointed in the direction of the fuel flow. Old fuel can leave gummy deposits that can become lodged in your John Deere mowers fuel line.This affects the amount of fuel available to start and run your John Deere. Use the fuel shut-off valve or crimp the fuel line to stop and start fuel flow while checking each section of the fuel line for a blockage. Fix:Once you identify a section of the fuel line that is restricted with a clog, remove the fuel line from your John Deere mower. Make sure your fuel flow is stopped before removing the line. Spray carburetor cleaner into the tube to loosen the clog. Blow compressed air through the line to remove the clog. Repeat with spraying carburetor cleaner and blowing air as needed until the line is no longer blocked. Install a new fuel line if you are unable to remove the clog or if your fuel lines are dry, brittle, and beginning to crack. The carburetor is essential to your engine running because it regulates the amount of fuel mixed with air to create combustion. The John Deere lawn mower carburetor can become dirty clogging components and preventing them from functioning properly. This will prevent the flow of gas needed to start the mower. Fix:Clean the carburetor by taking it apart and using carburetor cleaner to clean the carburetor including the float bowl and needle. You can find steps for cleaning your John Deere carburetor in thisarticle. You may have to replace or rebuild the carburetor if it appears to be in very bad condition or if cleaning does not solve your carburetor problem. Your John Deere lawn mower wont start when the battery is dead. Make sure your battery cables are secure and the connections are not showing signs of corrosion. Clean the terminals if they are showing signs of corrosion. Use a baking soda mix (2 cups of water and 3 heaping tbsp. of baking soda) and a wire brush. Fix:Test your battery with a multimeter. You will want a reading of about 12.7 volts. Place on a charger to charge your battery if your reading is less than 12.7 volts. Read more about the steps and items needed to charge your battery here. If your battery does not hold a charge, you will need to replace it with a new battery. Your lawn mower may use several safety switches in its operators presence control system. The switches are meant to keep you safe while operating the mower. There is a switch designed to kill the engine if the operator leaves the seat when the mower deck is engaged in addition to other safety switches. Refer to your operators manual for all safety devices used on your mower. A bad switch can cause your John Deere mower not to start. Fix:You can temporarily bypass the safety switch to identify a bad switch. A multimeter can also be used to help identify a bad switch. Never operate a mower without a good safety switch or when the switch is bypassed. Many people get injured by mowers annually by rolling them or falling off the mower. Its important to always have safety switches installed and working on your equipment. You never know when youre going to need them most. You insert the key into your ignition switch and turn it only to find nothing happens. Your John Deere mower wont start. The ignition switch can be the culprit. You can check the switch using a multimeter. Fix:Replace the ignition switchif you find it is bad. The ignition coil provides voltage to the spark plug so it can fire and start the engine. The engine will not start if the spark plug isnt able to fire. Fix:After you verified your spark plug is in good condition, check the continuity of your ignition coil usinganohmmeter. Replace the ignition coil if you find a break in the continuity. A lawn mower solenoid is an electromagnetic switch that is like an on-off switch that actuates the starter motor to turn over the engine. A click or hum when turning your ignition key is an indication to check your solenoid. Another indication your John Deere mower solenoid may be bad is when a wire attached to your solenoid gets hot and begins to smoke or melt. Fix: Test your John Deere mower solenoid by following the steps here. Replace your solenoid if it is found to be bad. While the charging system isnt the main reason your John Deere lawn mower wont start, it can contribute to a weak battery that prevents the mower from starting. When the charging system fails to charge the battery, the battery may not be able to start the mower the next time you go to use it. A bad stator or alternator can be the problem along with several other electrical parts. Read this article totest your charging system hereusing an ohmmeter. Fix:If you find the problem is in your charging system, have a small engine mechanic identify the actual cause of the failure. It could be several different items and you dont want to start guessing at the cause of the problem. Throwing parts at your John Deere mower gets pretty expensive. There are different safety procedures taken by John Deere when starting and operating your lawn mower that will shut off the mower. For example, when you get off yourzero-turnmower with the engine still running, your mower will shut off if you fail to set the parking brake first. Fix:Refer to your John Deere operating manual to ensure you are operating your lawn mower correctly. so you dont set off the safety features that shut off your lawn mower. CausesSolutionsEmpty Fuel TankFill with fresh fuel. John Deere mowers with 4-cycle engines require a minimum 87-octane rating and maximum 10% ethanol content.Bad or Old GasolineDrain the old fuel. Fill with fresh fuel adding a fuel stabilizer that reduces moisture and cleans the fuel system.Plugged Air FilterClean the filter by knocking dirt out of a paper air filter. If the filter is very dirty, dark in color, wet or damaged, you should replace it with a new filter.Dirty or Damaged Spark PlugClean a dirty spark plug with a wire brush. Replace the plug with a new one if it is very dirty, has broken porcelain, or damaged electrode.Plugged Fuel FilterReplace a plugged fuel filter with a new filter. Make sure the arrow on the inline filter is installed and pointed in the direction of the fuel flow.Plugged Fuel Line Shut off the fuel supply and remove the fuel line from the mower. Use carburetor cleaner to loosen the clog and compressed air to remove it. Replace a line if you are unable to remove the restriction.Bad Fuel PumpCheck fuel flow from the pump. Replace a bad fuel pump.Dirty CarburetorRemove the carburetor and clean it with a carburetor cleaner. You may need to rebuild it or replace it if cleaning alone does not work.Bad Safety SwitchReplace a bad safety switch.Loose or Corroded Cables ConnectionsMake sure the wires and cables are making a good connection. Remove any corrosion on the terminals and wires.Weak or Bad BatteryCharge a weak battery. Replace a battery that will no longer hold a charge.Faulty Ignition SwitchReplace a bad ignition switch.Plugged or Faulty Fuel CapReplace a fuel cap that is no longer venting to allow air to pass to the tank.Bad Ignition CoilReplace a bad ignition coil if there is a break in continuity.Bad Starter SolenoidTest a John Deere starter solenoid and replace it if bad.Faulty Charging SystemIf the battery is good and will hold a charge, but the mower continually dies due to a dead battery and will not start, have a mechanic identify whether your problem lies with a component of the charging system.Incorrect Starting ProcedureFollow starting procedures for the mower as there are safety switches that can prevent the mower from starting if not following the correct steps. John Deere Starting Problems As a John Deere owner, you will encounter a variety of problems over the life of the equipment. These can include problems with starting, dying while mowing, vibrating, cutting unevenly, and not moving. To help you identify the reasons your mower is having problems, I put together a handy guide to help you troubleshoot your mower. Check out Common John Deere Lawn Mower Problems and Solutions. What causes a John Deere not to start? A John Deere wont start when there is a lack of air, fuel, and spark for combustion. This is most likely due to a dirty carburetor, clogged air filter, fouled spark plug, weak battery, or old gas. When I turn the key on my riding mower nothing happens When the mower does nothing when the key is turned charge the battery, clean and tighten all wiring and cable connections to the battery and electrical components. Check the safety switches, ignition switch, PTO switch, and starter solenoid. Why wont John Deere lawn mower crank after sitting? The most likely reasons a John Deere lawn mower wont crank after sitting are a weak or bad battery; loose or corroded wiring and terminals, or wire damage from rodents.

**Why won't my riding mower start. What to do if john deere won't start. Why won't my john deere start. Why won t my john deere riding lawn mower start. Why won't my john deere mower start. Why wont my john deere riding mower turn over.**