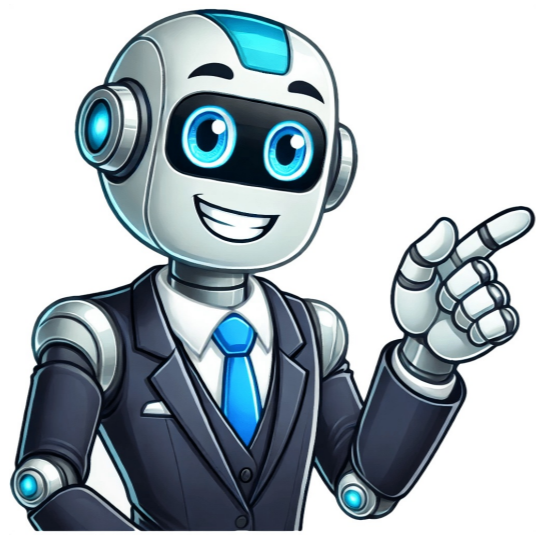


[Click Here](#)



This document describes various Multispan models, each with specific features and specifications. The models include counters, temperature controllers, timers, isolators, converters, and process indicators, among others. The Multispan models are categorized into several groups, including: * Multispan Length Counter: LC-1046, LC-2046, LC-445 * Multispan Batch Counter: BC-1046, BC-2046, BC-445 * Multispan Presettable Counter: TWS-1400M, TWS-2500, PC-1006, PC-2044, PC-2006 * Multispan RPM Indicator: RPM-1201, RPM-2201, RPM-3201, RPM-4201 * Multispan Programmable Temperature Controller: UTC-1202, UTC-2202, UTC-4202, UTC-121, UTC-221, UTC-421, UTC-122, UTC-222, UTC-422, UTC-1131, UTC-2131, UTC-4131 The models also include digital panel meters, counters, timers, and process indicators with various input and output specifications. Some of the key features and specifications of the Multispan models include: * Elegant appearance and compact size * Accurate and sturdy operation * Easy to operate * High accuracy and range * Display and key options * Dimension: 48 (H) x 96 (W) x 26 (D) mm or 45 (H) x 92(W) mm * Power supply: 100 to 270V AC, 50-60Hz * Environment condition: Operating temperature 0°C to 55°C, up to 95% RH Overall, the Multispan models are designed to provide accurate and reliable measurement and control solutions for various applications. 96 mm PI terminal connection L N 1 2 for voltage I/P (0-10V DC) and current I/P (4-20mA DC or 0-20mA DC). Panel Cutout Dimension: 26 x 45 mm. This product, the PI-41, is a universal input process indicator with up to 3-digit resolution, suitable for various applications. Key features include: * Input types: voltage (0-10V DC) and current (4-20mA DC or 0-20mA DC) * Filter time: 0.1 Sec to 10.0 Sec * Resolution: decimal point selectable (0.1, 0.01, 0.001, or 0001) * Range: -999 to 9999 (for all I/P) * Indication accuracy: $\pm 1\%$ FSD ± 1 digit (FSD = Full Scale Deflection) The display is a 4-digit, 7-segment, 0.39" red LED with SET, SHIFT, and INC keys. The power supply requires 100-270V AC at 50-60Hz, with a maximum consumption of 2VA @ 230V AC. Operating conditions include: * Temperature: 0°C to 55°C * Relative humidity: up to 95% RH (non-condensing) * Protection level: IP-65 (front side) as per IS/IEC 60529 : 2001 For more information, technical support, assistance, or product-related queries, please contact our support team.

[Multispan pi-41 manual pdf](#), [Multispan pi 41 manual](#), [Multispan pi 41 user manual pdf india](#), [Multispan pi-41 user manual pdf](#), [Multispan pi-11 user manual pdf](#), [Multispan pi-21 user manual pdf](#).