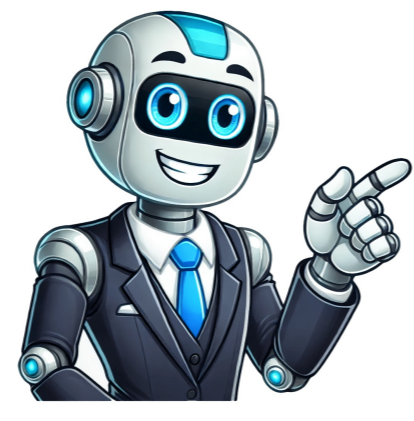


I'm not a robot

































As Adelaide's premier shopping precinct located in the heart of the city, Rundle Mall is home to a huge range of exclusive flagships, luxury brands, iconic South Australian labels and beauty destinations. Nestled between the bustling east end and vibrant west end, Rundle Mall is a shopping experience like no other. With global brands and local favourites dotted along the length of the Mall and hidden gems to be discovered within the historic centres, arcades and laneways, you'll find it all in one place in Rundle Mall. Rundle Mall is a pedestrian street mall located in the heart of Adelaide, South Australia. It is the premier shopping, dining and entertainment precinct in the city, with more than 649 retailers, services, arcades and centres. It stretches from King William Street to Pulteney Street, and is intersected by several laneways and cross streets that offer a variety of shops and experiences. It also has a fountain, a sculpture trail, a giant chess board and a playground for children. Rundle Mall was opened as a pedestrian mall in September 1976, after the section of Rundle Street between King William Street and Pulteney Street was closed to vehicular traffic. It was the first pedestrian mall in Australia and one of the first in the world. It was named after John Rundle, a member of the South Australian Legislative Council who donated land for the construction of Rundle Street in 1837. The mall has undergone several upgrades and expansions over the years to keep up with the changing trends and demands of the customers. Rundle Mall is owned and managed by the City of Adelaide, which works closely with the Rundle Mall Management Authority (RMMA) to ensure the malls success and vibrancy. The RMMA also represents the interests of the retailers, property owners and stakeholders in the mall. Rundle Mall has a diverse range of stores and services that cater to different tastes and budgets. It has exclusive flagships and global brands, such as H&M, Nike, Tiffany & Co., Sephora and Swarovski. It also has iconic South Australian labels and local favourites such as R.M. Williams, Haighs Chocolates, Gerard McCabe Jewellers and Have You Met Charlie?. It also has beauty destinations, sports stores, mens fashion outlets, gift shops and more. Rundle Mall also offers a variety of dining options for customers to enjoy. It has cafes, restaurants, food courts and bars that serve different cuisines and specialties, such as Brick Lane Espresso, Laubman & Pank Optometrists, Organica Pizzeria, Red Pepper Chinese Restaurant and The Lott. It also has seasonal pop-ups and activities that provide entertainment and fun for the whole family. Rundle Mall is open seven days a week, from 9:00 AM to 5:30 PM on weekdays, from 9:00 AM to 9:00 PM on Friday and from 9:00 AM to 5:00 PM on Saturdays and Sundays. Rundle Mall can be easily accessed by public transport, as it is close to several bus stops, tram stops and train stations that connect to other parts of the city and beyond. It also has several car parks nearby that offer convenient parking for customers (over 5000 parking spaces). Mall attracts more than 400,000 visitors per week and more than 23 million visitors per year. Rundle Mall is located in Adelaide , South Australia, SA 5000. Rundle Mall offers more than 650 stores and other services such as cinemas or restaurants. Get information about opening hours, store list directions with map and GPS. Rundle Mall is located on address 71 Rundle Mall, Adelaide , South Australia, SA 5000. If you have visited the Rundle Mall, please write a short review to help future customers and rate it by assigning a number of stars.Page 2 2KW Bar and Restaurant in Rundle Mall - location: Adelaide , 71 Rundle Mall, South Australia, SA 5000. Find business information about store: hours, directions and map, contacts. If you have visited 2KW Bar and Restaurant located in Rundle Mall, just write a short review for featured customers and give rating via number of stars. With over 700 retail outlets, 300 services, 3 department stores, 15 arcades and centres and over 5,000 car parking spaces, you can expect it all in Rundle Mall. As South Australia's premier shopping destination, Rundle Mall is home to the biggest and best range of brands, including exclusive flagships H&M, Tiffany & Co. and Sephora, alongside some of the state's best restaurants and dining destinations. Located in the heart of Adelaide between the city's buzzing east end and vibrant west end, Rundle Mall is a bustling hub of activity and excitement year-round. The rich history of the Precinct, along with its proximity to museums and art galleries, has cemented Rundle Mall as a cultural landmark within South Australia. The length of the Mall features award-winning artworks, including the iconic work The Spheres by Bert Flugelman, affectionately known as the Mall's Balls', joined by newer additions Pigeon by Paul Sloan and A Day Out by Marguerite Derricourt. Throughout the year, Rundle Mall plays host to a series of major events, including Tasting Australia and ADL Fashion Week, as well as activations, pop-ups and a diverse range of world-class buskers to enthrall the 42 million visitors welcomed to the Mall annually. Open Rain, hail or shine, Rundle Mall is open 7 days a week, nearly every day of the year. Monday - Thursday - 9:00 am - 5:30 pm Friday - 9:00 am - 9:00 pm Saturday - Sunday - 9:00 am - 5:00 pm Parking With more than 5,000 parking spaces available in Rundle Mall, it's easy to find a place to park when visiting. Stephens Place, Adelaide SA 5000 Secure Parking, 90-100 Grenfell Street, Adelaide SA 5000 Wilson Parking, 225 North Terrace, Adelaide SA 5000 Wilson Parking, Corner Pulteney and Rundle Street, Adelaide SA 5000 U Park, 163-185 Rundle Street, Adelaide SA 5000 U Park, 18-34 Wyatt Street, Adelaide SA 5000 View Parking Locations Getting There By bus Bus services from most metropolitan Adelaide suburbs stop on all of Rundle Mall's boundary streets - North Terrace, King William Street, Grenfell Street and Pulteney Street. If you're already within the CBD, Adelaide Metro runs a free City Loop Bus (99C) which stops at Rundle Mall. Please visit the Adelaide Metro website to find out which service is best for you. By train Rundle Mall is just a few minutes walk from The Adelaide Railway Station, which is the terminus for trains from Belair (Adelaide Hills), Gawler Central (north), Outer Harbor & Grange (west) and Seaford & Tonsley (south). Rundle Mall is a short five-minute walk from the station. Alternatively, you can jump on the City Loop Bus (99C) or the tram, both which stop near the western entrance of the Mall on King William Street and are free from the station. Please visit the Adelaide Metro website to find out which service is best for you. By tram Adelaide Metro's tram services run between Glenelg Beach, the Adelaide Entertainment Centre in Hindmarsh, Festival Plaza and the Adelaide Botanic Garden, and all services stop right outside Rundle Mall's western entrance on King William Street. If you're already in the CBD, jumping on the tram won't cost a thing, as Adelaide Metro offers free travel between the South Terrace tram stop, the Entertainment Centre, Adelaide Botanic Garden and Festival Plaza. Please visit the Adelaide Metro website to find out which service is best for you, and full timetables. By car With more than 5,000 parking spaces available in Rundle Mall, it's easy to find a place to park when visiting. To work out which car park will be best for your visit, please see our parking page. By taxi/rideshare Rundle Mall is serviced by the following taxi ranks: On Gawler Place in the middle of the Mall (northern side of Mall, near the Canopy) On Pulteney Street (western side of street) at the eastern end of the Mall On King William Street (eastern side of street) at the western end of the Mall On North Terrace at the western end of the Mall (near the northern entrance to the Myer Centre) On Grenfell Street (southern side of street) near the junction of King William Street at the western end of the Mall. The Adelaide Visitor Information Centre at at 25 Pirie Street. Adelaide, has a large range of maps, brochures and even guides for Rundle Mall, Adelaide and South Australia to take away and use throughout your visit. Rundle MallAdelaide View MapKaurna Telephone:1300 588 140 - Adelaide Visitor Information CentreRundle MallAdelaideSouth Australia1300 588 140 - Adelaide Visitor Information Centre Coming to Rundle Mall. Funlab @ Rundle Mall www.rundlemall.com Adelaide Visitor Information Centre Myer | Adelaide With over 700 retail outlets, 300 services, 3 department stores, 15 arcades and centres and over 5,000 car parking spaces, you can expect it all in Rundle Mall. As South Australia's premier shopping destination, Rundle Mall is home to the biggest and best range of brands, including exclusive flagships H&M, Tiffany & Co. and Sephora, alongside some of the state's best restaurants and dining destinations. Located in the heart of Adelaide between the city's buzzing east end and vibrant west end, Rundle Mall is a bustling hub of activity and excitement year-round. The rich history of the Precinct, along with its proximity to museums and art galleries, has cemented Rundle Mall as a cultural landmark within South Australia. The length of the Mall features award-winning artworks, including the iconic work The Spheres by Bert Flugelman, affectionately known as the Mall's Balls', joined by newer additions Pigeon by Paul Sloan and A Day Out by Marguerite Derricourt. Throughout the year, Rundle Mall plays host to a series of major events, including Tasting Australia and ADL Fashion Week, as well as activations, pop-ups and a diverse range of world-class buskers to enthrall the 42 million visitors welcomed to the Mall annually. Open Rain, hail or shine, Rundle Mall is open 7 days a week, nearly every day of the year. Monday - Thursday - 9:00 am - 5:30 pm Friday - 9:00 am - 9:00 pm Saturday - Sunday - 9:00 am - 5:00 pm Parking With more than 5,000 parking spaces available in Rundle Mall, it's easy to find a place to park when visiting. Stephens Place, Adelaide SA