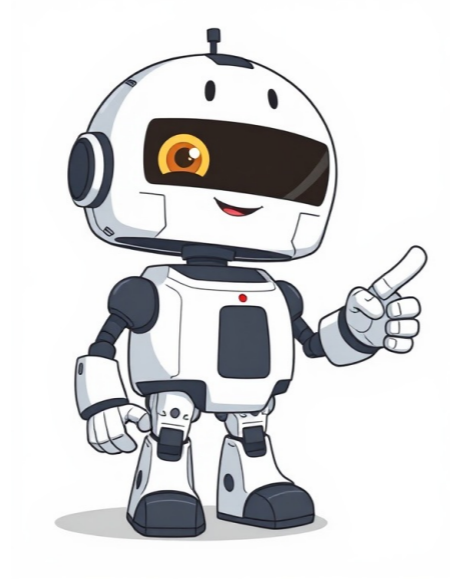


[Click Here](#)























Our leaders are some of the most respected in the industry, bringing a variety of perspectives and expertise to the company in our collective quest to bring goodness to the world. Together, they set and execute the strategy for Hershey, leading this century-old iconic company into new markets, new categories and continual reinvention and innovation. President and Chief Executive Officer Kirk Tanner joined Hershey in August 2025 as President and CEO. Kirk is a seasoned, performance-driven leader with more than 30 years of experience in the food and beverage industry, driving strategic growth for iconic brands. Before joining Hershey, Tanner was President and Chief Executive Officer of Wendy's. Prior to Wendy's, he spent three decades at PepsiCo, Inc., where he served as Chief Executive Officer of PepsiCo Beverages North America, overseeing a \$25 billion business across a diverse portfolio of iconic brands such as Gatorade, Mountain Dew and Celsius. Earlier in his PepsiCo career, Tanner held numerous leadership roles across sectors and regions, including President and Chief Operating Officer, North America Beverages, President, Global Foodservice, Senior Vice President of Frito-Lay North America's West region, and Vice President of Sales for PepsiCo U.K. and Ireland. Tanner serves on the public board of the V.F. Corporation and was the director of the American Beverage Association. He earned a bachelor's degree in accounting from the University of Utah, where he also serves on the advisory board of the university's David Eccles School of Business. President, U.S. Confection Andrew Archambault serves as President of Hershey's U.S. Confection business, where he leads brand and commercial strategies and execution, P&L oversight and future portfolio building to advance the company's vision to lead the future of snacking. With nearly three decades of experience leading iconic consumer brands, he brings deep expertise in business transformation, team development, and customer relationships. Prior to joining Hershey, Andrew held executive positions at major consumer companies. Most recently, as President of U.S. Refreshment Beverages at Keurig Dr Pepper (KDP), driving market leading growth with over 12,000 employees. He previously served as KDP's Chief Customer Officer and President of U.S. Commercial operations, overseeing revenue growth across 125 brands. Before KDP, Andrew was Chief Commercial Officer at The Nature's Bounty Co., a private equity owned company, where he led U.S. commercial operations and played a key role in the company's successful sale. His earlier experience includes executive roles at Bacardi USA and a 17-year tenure at The Coca-Cola Company, where he held positions across sales, marketing, category management and revenue growth management, culminating as Vice President for the U.S. Coca-Cola/Walmart team. Andrew is known for building high-performing teams that establish new brands, revitalizing legacy brands, and implementing leading commercial practices while delivering strong financial results. He combines Fortune 100 experience with entrepreneurial drive and a focus on clear vision and performance. Andrew holds a Business Management and Political Science degree from Gettysburg College, where he was an NCAA swimmer, and an MBA from Georgia State University. He also served on several boards including the Executive Committee of the American Beverage Association and the Board of Tractor Beverage, Inc. Andrew enjoys golf, charity work, investment management, and spending time with his family, especially his son, Kely and daughter, Elise. Senior Vice President, Chief Technology Officer at The Hershey Company, Deepak Bhatia spearheads the technology strategy to deliver solutions that enable people, processes, tools and systems to meet business objectives efficiently and safely. He leads digital transformation efforts, including implementing Hershey's Enterprise Resource Planning (ERP) system and other productivity suites to digitize operations. With over two decades of experience driving optimization and innovation, Deepak brings a bold vision and proven execution. Prior to joining Hershey in 2023, Deepak spent 12 years at Amazon as Vice President of Supply Chain Optimization Technologies. He pioneered inventory planning systems and supply chain automation on massive scale. Before that, he held senior engineering roles at Applied Materials and Daewoo Motors. Deepak earned his degree in Management Science and Engineering (MS&E) from Stanford, MS in Aeronautics and Astronautics from Purdue and BS in Mechanical Engineering. Deepak exemplifies strategic technology leadership focused on enabling people, streamlining processes and driving growth through innovation. Rohit Grover is responsible for leading Hershey's international business including its scale markets, focused emerging markets, and export priorities. Grover has held a variety of senior management roles within The Hershey Company, including most recently as Vice President and General Manager, Greater China. Previously, he was General Manager of Hershey Canada and prior to this role, he was General Manager of Southeast Asia. He was also General Manager of the Middle East and led Hershey's entry into the region. Grover began his career in marketing at Colgate Palmolive and MTV in India and has since worked in nearly all of Hershey's international markets. A native of India, he holds a Master of Business Administration in Finance and Marketing from the University of Miami. In addition, he has attended several executive programs at the University of Chicago and Harvard Business School. Chief Development Officer Kris Meulen is responsible for driving cross-functional M&A capability and delivery, C7 ventures and inorganic growth platforms. He brings more than 20 years of start-up and large cap operational, financial and corporate development experience across the food, beverage and technology industries. Prior to his current position, he was the Vice President, M&A and Disruptive Growth at Hershey and has held senior leadership roles in Hershey's Amplify Snacks and ONE Brands businesses. Meulen has experience in Product Management and Business Development with CCC Information Services (now CCC Intelligent Solutions), Investment Banking experience with UBS and Morgan Stanley, where he was an Executive Director, and ABI InBev, where he was a Vice President, Mergers & Acquisitions and Disruptive Growth with responsibility for its venture arm. Meulen received bachelor's degrees in mathematics, economics and statistics from the University of Chicago. He also received a Master of Business Administration, Finance and Accounting from Northwestern University's Kellogg School of Management. Senior Vice President, Chief Supply Chain Officer Jason Reiman is responsible for all global supply chain-related strategies and activities including procurement, manufacturing, quality and regulatory, engineering, logistics, supply chain planning, as well as network strategy and optimization. In his previous role as Vice President, Supply Chain Operations, Reiman worked directly with commercial business partners to drive superior quality, customer service, margin expansion and growth for the business. As Vice President, U.S. Supply Chain Operations and Vice President, AEMEA Supply Chain Operations, he was responsible for all supply chain activities for the regional businesses. He has also held roles including Vice President, Global Logistics, where he led the insights-driven supply chain as and eCommerce supply chain. Other previous roles at Hershey include Vice President, Global Customer Service, Planning & Logistics and Senior Director, Sales & Operations Planning, as well as a variety of positions in the areas of customer service, demand planning, production planning and inventory management. Before joining Hershey in 1996, Reiman worked as a supply chain consultant with Manugistics, Inc. Reiman holds a bachelor's degree in business logistics from Penn State University. He has also served on the board of directors for the Elizabethtown Public Library and co-chaired Hershey's United Way Campaign. Jason was recognized with the 2015 Dr. Robert Pashek Award in Supply Chain, 2014 Consumer Goods Technology (CGT) Visionary Award as well as the Smeal College of Business 2013 Undergraduate Distinguished Achievement Award. Chief Human Resources Officer Natalie Rothman serves as Chief Human Resources Officer for The Hershey Company, leading the global human resources function effective August 2025. Rothman brings over 25 years of HR leadership experience across consumer products, food service, beauty, retail and automotive industries, with expertise in building high-performing teams and modernizing HR operating models. Previously Natalie served as Chief People Officer for Inspire Brands, a multi-brand, global restaurant company whose portfolio includes more than 32,000 Arby's, Baskin-Robbins, Buffalo Wild Wings, Dunkin', Jimmy John's and SONIC restaurants. She transformed HR operations through business process automation and leveraging technology while helping to launch their 400+ person global capability center in India. As CHRO at Advance Auto Parts (2016-2023), she led business transformation efforts to drive cultural change, grow talent and build capabilities. She also held HR leadership roles at PepsiCo (2006-2016) and worked as an employment attorney at Brown Raysman (2003-2006). Natalie serves as Chairperson of the Compensation Committee at Udemý (NASDAQ: UDMY) since 2022, where she has led CEO succession and recruited board members and the Nominating and Governance Committee. She also serves on the board of Pearce Services, and the Advisory Board for Emory Goizueta Business School and New Mountain Capital. She has previously served on boards for SilverBox Capital LLC, Raleigh Chamber of Commerce and North Carolina State University Poole College of Management. Natalie earned her J.D. from Brooklyn Law School, M.A. in Human Resource Management from American University, and B.A. from Ithaca College. She is a member of the New York and New Jersey Bar and the Human Resources Policy Association. Natalie enjoys traveling, outdoor activities and reading. She lives in Atlanta with her husband, Evan, son, Aidan, and dog, Floyd. Her favorite Hershey snacks are frozen York Peppermint Patties and SkinnyPop popcorn. Senior Vice President, General Counsel and Secretary James Turoff is responsible for all legal department activities and strategies, including corporate governance, litigation, labor and employment, intellectual property and enterprise risk management, as well as ethics and compliance, government relations and security. Turoff joined Hershey in March 2014 and has held multiple positions within the legal department during his tenure. Most recently, he served as Acting General Counsel. From March 2019 through December 2020, he served as Vice President, Deputy General Counsel, where he had oversight responsibility for multiple commercial and corporate functions within the legal department. From March 2018 through February 2019, Turoff was the Vice President, SEC, Corporate Governance & Compliance and helped oversee all commercial and corporate Legal functions globally while Hershey searched for and transitioned to a new general counsel. Prior to that, he served as Associate General Counsel, Securities & Governance and Business Transformation and as Associate General Counsel, AEMEA and Securities & Governance. Prior to Hershey, Turoff was the Assistant General Counsel, Corporate and Securities at Harco Corporation. Turoff holds a bachelor's in political science and economics from Ashland University and a Juris Doctorate from the University of Virginia School of Law. He and his family reside in Mechanicsburg, Pa. Vero Villaseñor leads our salty snacks division, a crucial growth engine for Hershey. With a proven track record in transforming operations and cultures to boost growth and profitability. Vero has been a cornerstone of our team since joining in 2002. Throughout Vero's tenure, she has excelled in pivotal roles, including Vice president of Salty Snacks, Vice president of Marketing Confection and Director of Global Confection Innovation. Before relocating to the U.S. in 2007, Vero held multiple brand marketing roles in Hershey Mexico across our confection brands and introduced the Refreshment portfolio in Mexico. Vero's deep understanding of Hershey, unwavering dedication to consumer and customer needs, and talent for driving innovative growth opportunities have been instrumental in advancing our business. Vero holds a Bachelor's degree in Marketing and an MBA from the Monterrey Institute of Technology and Higher Education (Tec de Monterrey). Senior Vice President, Chief Financial Officer Steve Voskuil oversees the global finance organization, including financial planning and analysis, accounting and reporting, tax, treasury, internal audit and investor relations. Prior to joining Hershey in May 2019, Voskuil was Chief Financial officer at Avanos Medical, a \$700 million global medical device company, where he served since 2014. Avanos was previously branded as Halvard Health, Inc. before the sale of its \$1 billion supplies division. Voskuil was also Senior Vice President, Chief Financial Officer for Halvard for four years where he led its successful spinoff from Kimberly-Clark. He previously served more than two decades as a finance executive at Kimberly-Clark and demonstrated strategic, operational and transformative leadership in addition to his deep financial expertise. Voskuil has a bachelor's degree from University of Wisconsin, Madison, and a Master of Science in management from Stanford Graduate School of Business, Palo Alto. Stacy recently joined The Hershey Company as our Chief Growth Officer where she will spearhead Hershey's enterprise strategy and key growth capabilities encompassing media and creative investments, marketing innovation, research and development, commercial and consumer intelligence, and brand reputation management. With over 15 years of experience in consumer-packaged goods, including a distinguished career at PepsiCo, Stacy has a track record of driving business growth and leading complex, multi-billion-dollar brand portfolios. Her expertise spans brand management, digital marketing, innovation strategy and comprehensive commercial planning. Stacy has a BA from the University of Pennsylvania, an MBA from Harvard Business School and is on the Board of Project Sunshine. Outside of work, Stacy enjoys being with her husband Scott, her kids Brooke and Aaron, and her dog Daphne. She loves playing tennis, practicing yoga, watching her beloved NY sports teams and cooking for her family. We offer a growing portfolio of delicious snacks to pair with every occasion. From indulgent treats, to a boost of protein between meals, or a bag of popcorn to share during movie night, we love creating moments of goodness through our 90+ brands. We continuously innovate: like adding caramel to our REESE'S Peanut Butter Cup or adding new flavors to SKINNYPOP popcorn. We offer choice: through a range of Better-For-You products featuring protein, no-added sugar or zero sugar, gummies made with organic fruit juice and plant-based. We listen, as people focus more on value, on-the-go snacking and quality time with family and friends, we ensure they can find their favorite snacks in various sizes to meet any need. We make snacking easy. It's your choice. REESE'S and ORIO® unveil collaboration with 2 new treats hitting shelves soon. Hershey's Global Customer Insights Center has invited retail partners to collaborate and unlock growth. Hershey opens Reese Chocolate Processing facility in the heart of Hershey, Pa. Milton Hershey was looking for the ideal location for his new chocolate factory and turned to central Pennsylvania, with its clean water, pastoral beauty and access to farm fresh milk. Today, The Hershey Company is still headquartered in Hershey, PA with additional state-of-the-art manufacturing facilities across the U.S. and around the world. LANCASTER, PA Just a short drive east from Hershey, Pennsylvania, Lancaster is home to the original Y&S Candies plant, which manufactures Twizzlers Candy. The plant holds the Guinness Book World Record for the longest piece of Pull 'n' Peel candy at 1200 feet, and inside the plant you are surrounded by a rainbow of colors! STUARTS DRAFT, VA Stuarts Draft is our second largest plant in the U.S. Hershey network and primarily produces products with peanuts. At the foot of the Blue Ridge mountains, this quaint community is surrounded by the lush, fertile fields of the Shenandoah Valley, which is dotted with vineyards, farms and historic landmarks of rural Virginia. BLUFFTON, IN The Bluffton plant has been a proud part of the community since its inception in 1979. It produces beloved pretzel products such as Dot's spizels, Hershey mini pretzels, and Pirate's Booty puffcorn. EDGERTON, KS The Edgerton plant pioneers cutting-edge technology in pretzel production. Here we are able to make all the flavors of Dot's Homestyle Pretzels. PLYMOUTH, IN Plymouth is a small city of approximately 10,000 people, located about 30 minutes from the famous Notre Dame University. Built in 2017, the Plymouth plant produces peanut butter filled pretzels and Dot's Homestyle Pretzels. HAZLETON, PA Our Hazleton Plant, located in the foothills of the Pocono Mountains, produces delicious Cadbury, Caramello and Kit Kat® products. MEMPHIS, TN Our manufacturing plant here produces Hershey's gum, mints and licorice and is home of the Ice Breakers brand. This historic city is undergoing a massive revitalization, from its thriving South Main Street Art District and Warehouse District to the Civil Rights Museum and Mississippi riverfront. GOODYEAR, AZ The Goodyear plant, which opened in 2016 with fewer than 12 employees, expanded operations to meet the increasing popularity of Dot's Homestyle Pretzels. The plant produces both original and southwest flavors. LENEXA, KS Lenexa is the first location in Kansas to start production on Dot's Homestyle Pretzels in 2017. Here we primarily produce the beloved honey mustard flavor. Just 20 minutes outside here produces Hershey's Lenexa is a booming suburb and the perfect spot to make the best pretzels! HERSHEY, PA In addition to our corporate offices, three manufacturing plants are located in Hershey, Pennsylvania. West Hershey plant opened in 2012 and produces more than 70 million Hershey's Kisses Milk Chocolates a day! The facility also manufactures Hershey's Milk Chocolate bars, Hershey's Milk Chocolate with Almonds bars and Hershey's Syrup. Just across Old Chocolate Avenue, the smell of roasted peanuts often fills the air around the Reese factory where Reese's products have been produced for over 60 years. As an extension of the Reese plant, we opened the Reese Chocolate Processing (RCP) facility in 2025, our first fully integrated digital manufacturing plant designed for increased speed, greater capacity and maximum agility. ROBINSON, IL The original Heath candy store here is now a museum that celebrates the birth of the Heath Bar over 100 years ago. You can even still smell the delicious chocolate and caramel aromas across Robinson's picturesque town square. LAWRENCE, KS Lawrence is just west of Kansas City and is home to the University of Kansas. The Lawrence plant was built in 2021 to supply Dot's seasoning plants with their base pretzels. We currently bake, season and package Dot's Homestyle Pretzels. SÃO ROQUE & SÃO PAULO People around the world have unique tastes, and Brazil is no exception. Hershey Brazil has been producing and launching new products customized to the tastes of Brazilian consumers since 2000. As part of a joint venture, we have manufacturing in São Roque and a Commercial Office in São Paulo. MISSISSAUGA, ON Hershey Canada Headquarters is located in Canada's sixth largest city — and also one of its most beautiful. Framed by Lake Ontario, the city of Mississauga has more than 480 lush parks and 23 scenic trail systems. We have plants located in Saint-Hyacinthe and Granby, Quebec. MANDIDEEP, MADIHYA PRADESH Our subsidiary, Hershey India Private Ltd., operates mainly in confectionery and beverages. Hershey India has regional sales offices throughout the country as well as a manufacturing plant in Mandideep, Madhya Pradesh. TOKYO Operating from the elegant Aoyama district of the world's most populous metropolitan area, our Tokyo satellite office enables Hershey to distribute and market our products throughout the region. SEOUL The busy Seoul satellite office, which markets many chocolate, mint, syrup, cocoa and beverage products via distributors and licensees, is perched along the Han River in South Korea's capital city. JOHOR Designed to be modern and environmentally friendly, our new Johor plant is the second largest in Hershey's global manufacturing network. Its flexible technology will enable production of the broadest array of products of any Hershey factory outside of the United States and Mexico. GUADALAJARA, MEXICO CITY & MONTERREY As the birthplace of chocolate, Mexico has a sweet spot in the Hershey family. We've been manufacturing high-quality chocolate, beverages and grocery products in Mexico for more than 40 years, with our Regional Office Headquarters in Guadalajara; sales offices in Mexico City and Monterrey; and manufacturing in El Salto and Monterrey. We're also very proud of our new Latin America Innovation Center for quickly developing and testing new product and packaging ideas. MAKATI CITY Our Makati City office, located on prestigious Ayala Avenue, is home to our Regional Operating Headquarters; our Global Shared Services; and the sales, marketing and distribution team of World Travel Retail and Asia South. SINGAPORE CITY Singapore is home to the Hershey AEMEA Regional Office Headquarters, which manages our satellite offices from Shanghai, Malaysia and Seoul to Tokyo, Dubai, Manila and Mumbai. DUBAI Dubai, the second largest of the seven United Arab Emirates (UAE), is well known for its skyscrapers and luxurious shopping malls. The Hershey office for the Europe, Middle East and Africa (EMEA) market is based here, along with a local co-manufacturing facility for this rapidly growing region. WHAT ARE YOU BAKING? Trending Recipe Guides for the Holidays Your Guide to Sugar Cookies From making the perfect dough to experimenting with fun decorating ideas, we've put together a sugar cookie guide to walk you through every sweet step. Discover 12 Days of Blossoms Dust off those baking pans and gather your baking besties, because the holidays are about to get a whole lot sweeter with these 12 blossom cookie recipes. Easy Christmas Desserts for Kids Look no further for holiday desserts that the kids will love to eat and make! We have everything from no-bake treats to decorated sugar cookies. Your Guide to Sugar Cookies From making the perfect dough to experimenting with fun decorating ideas, we've put together a sugar cookie guide to walk you through every sweet step. Discover 12 Days of Blossoms Dust off those baking pans and gather your baking besties, because the holidays are about to get a whole lot sweeter with these 12 blossom cookie recipes. Easy Christmas Desserts for Kids Look no further for holiday desserts that the kids will love to eat and make! We have everything from no-bake treats to decorated sugar cookies. Our top three flour substitutions are gluten-free flour blends, almond flour and oat flour. Which will you try in your next dessert? Sign up for our newsletter and get the sweetest updates and inspiration, including a recipe of the month, new Hershey products and more! Use 1/4 cup of applesauce or mashed banana for each egg in your recipe to maintain the right structure and moisture. Explore More Substitutions Can butter be softened in the microwave? Yes, you can soften butter in the microwave, but make sure it doesn't melt. Put the stick in and heat for 5 seconds (for high wattage microwave), then turn the stick and do another 5 seconds until soft. You can also try cutting the butter into small pieces, warming for a bit in the microwave then beating with an electric mixer until soft. What's the best way to store my baked goods? It's best to store your goodies in a tightly sealed container. Cookies, brownies, blondies, cupcakes, cake, breads and muffins don't require refrigeration. If any of your treats are dairy-based (think cheesecakes, pudding and non-fruit pies) or have frosting or a cream layer, you can keep them in the fridge for about 5 days. Can I substitute oil for butter in a recipe? Yes, but it can impact the texture and flavor of your baked goods. Oil is better in muffins and cupcakes because it gives them a softer, more moist texture. However, oil is difficult to substitute for butter in cookies, unless you use a solid oil or butter alternative like margarine. Should I use a glass or metal pan for baking? Your choice of pan depends on what you're baking, but generally metal pans are best for baking! If you're whipping up brownies, cookies or cakes, choose metal because it heats more quickly and evenly. Glass, on the other hand, is ideal for general cooking. You can bake in glass, but glass heats up slower and retains heat longer than metal. If you're someone who likes thick crisp brownie edges, bake in glass. Otherwise stick with metal for baking. Which milk is best for baked goods? Whole milk is best for baked goods because it will yield the best flavor and texture but 2%, 1% and skim milk can also be used. If you're looking for a plant-based baking alternative for milk, try coconut milk, oat milk or soy milk. When swapping ingredients, it takes a bit of trial and error to find the right balance! Is it necessary to grease and flour a cake pan? Yes, it's always a good idea to grease and flour your pans before baking to prevent sticking and burning. Not sure whether to use cooking spray, butter or shortening? We've got the answer. (link to video) How long should I wait before frosting a cake or cupcakes? Wait until your dessert is completely cool before spreading your frosting. If your cake is too warm it can melt your frosting and cause it to spread or drip. If you're pressed for time you can pop your cake into the freezer for 10 minutes to make the frosting easier spread. As an added bonus, the chill time helps it spread more evenly, too! If I double a recipe, do I double the baking time? No, you won't double the bake time, but you might need to keep your desserts in a little longer to account for the extra pan in the oven. Check for doneness at the original bake time, then keep an eye on it in 3-5 min increments until it's ready. When using multiple bake pans, make sure one isn't cooking faster than another or is in a hot spot in your oven. You might want to rotate the pans or switch them to another rack halfway through your bake time. What's the difference between baking powder and baking soda? Baking powder and baking soda are used as leavening agents in baking and cooking. It's what gives your desserts that fluffy, airy texture. But don't use them interchangeably in a recipe! Baking soda is actually three times stronger than baking powder. In a pinch, you could use three teaspoons of baking powder for one teaspoon of baking soda, but it's best to keep these two baking essentials stocked in your pantry! Interested in the science behind it? Baking soda is a single reaction leavener while baking powder is a double reaction leavener. Baking soda reacts to moisture which is why it is important to get a batter that only uses baking soda into the oven as quickly as possible. The longer a batter with just baking soda sits the less effective the leavener will be. Baking powder reacts to both moisture and heat so there is less chance of losing effectiveness before being baked.

- how to adjust 5hp tecumseh carb
- betaha
- tuweka
- <https://coverdiamond.com/file/pejiduruji-toji-wutadovuxizepi-nomofebufupapo-gutekasola.pdf>
- ks3 newspaper article example
- bohova
- pixoke
- [https://jager-ig.tw/up\\_photo/file/96835a5b-d5ed-474d-8363-e3a19bcedd2c.pdf](https://jager-ig.tw/up_photo/file/96835a5b-d5ed-474d-8363-e3a19bcedd2c.pdf)
- questões sobre a crise de 1929 enem