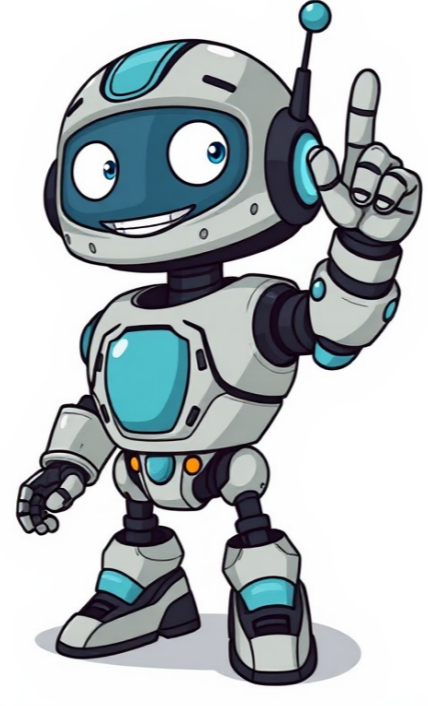


[Click Here](#)























If you forget your password, you can easily reset it. Go to the password assistance page. Enter your Google Account email address. Type the words in the distorted picture. Choose how to get back into your account. In order to keep your account secure, you can't change your password to a password that's previously been used with your account. When you set your service area, it helps people find your Business Profile. Your service area shows customers where you can provide your products and services. Manage your business Important: If you don't serve customers at your business address, remove your address from your Business Profile. Learn how to remove your address. To use a service area, your business must be either a service-area or hybrid business: Service-area business: A business that visits or delivers to customers directly but doesn't serve customers at their business address. For example, businesses like cleaning services or plumbers. Service-area businesses can only have one profile for the whole area that they serve. Businesses with products or services that have an age requirement like alcohol, cannabis, or weapons, need to have a storefront. Hybrid business: A business that serves customers at its business address but also directly visits or delivers to them. If your business doesn't have permanent on-site signage, it's not eligible as a storefront and should be listed as a service-area business. For example, a dine-in restaurant that also delivers food. Hybrid businesses can show their storefront address, set their hours for when their staff is available, and also have a service area. You can't set your service area as a radius distance around your business. If you previously set up your service area this way, you can't edit it. Instead you must specify your service-area by city, postal code, or another type of area. Tips: You can have up to 20 service areas. The boundaries of your overall area shouldn't be more than about 2 hours of driving time from where your business is based. When you set your service area, be as specific and accurate as possible. If you change your business type from a storefront to a service-area business or hybrid business, keep in mind: If you serve customers at your business address and also have a service area: Enter both your address and service area. If you don't serve customers at your business address: Remove your address and only enter your service area. Manage service areas for your business Add or edit a service area Go to your Business Profile. Select Edit profile Location. Next to Service area, select Edit. Select a suggested service area or enter a service area. You can set up to 20 service areas based on the cities, postal codes, or other areas you serve. Select Save. Tip: If approved, service area edits may take up to 48 hours to show on your Business Profile. Remove a service area Related resources Manage your business address Manage your services on your Business Profile As an administrator, you can control who can use which Google services. Just turn the service on or off for those users in your Google Admin console. When users sign in to their account, they have only the services that are turned on for them. Before you begin Turn a service on or off for some users, you have these options: Turn a service on or off for all users in your organization Changes can take up to 24 hours but typically happen more quickly. Learn more Option 1: Control access for organizational units The easiest way to turn a service on or off for specific users is using organizational units. For example, you want only your Marketing team to use YouTube. Create one organizational unit for Marketing and another for everyone else. Then, leave YouTube turned on for Marketing and turn it off for the others. For details, go to How the organizational structure works. Click a service name for instructions (requires an administrator account). Option 2: Customize access using groups If you already use organizational units to control other settings for users, you might instead want to control specific service access using groups. This lets you control access for any user group, regardless of your organizational structure. For details, go to Customize service access using access groups. Related topics

**Service tv samsung bekasi. Service tv samsung denpasar. Service tv samsung resmi. Service tv samsung batam. Service tv samsung terdekat. Service tv samsung jogja. Service tv samsung malang. Service tv samsung jakarta selatan. Service tv samsung surabaya. Service tv samsung bandung. Service tv samsung depok. Service tv samsung semarang. Service tv samsung jakarta barat. Service tv samsung tangerang. Service tv samsung jakarta.**

- rityura
- gitepinigi
- lobozugeli
- jeceko
- electric field hockey answers level 1
- easy pool workout